



# BLOCK 4 | WATER

Pattern by Rachel Rossi

**Level:** Intermediate

**Techniques:**

- Traditional Piecing
- Curved Piecing
- Bias Tape Appliqué

**Supplies:**

- 5" Quarter Circle Template (paper template included)
- 28mm Rotary Cutter
- Monofilament Thread
- Stitch-n-Tear Stabilizer
- 1/2" Bias Tape Maker
- Elmer's Disappearing Purple Glue
- Erasable Fabric Marker
- Microtex 80/6 Needle
- 3/8" Iron-on Adhesive Tape
- Light Box (optional)

## FABRIC REQUIREMENTS

*All fabrics are assumed to be 45" wide, 100% quilting cotton*

**-Background:** 1/2 yard

**-Watering Can:**

1/4 yard AND  
 47" of bias (already cut during Block 1)  
*or if you haven't cut bias already, you'll need 1/2 yard total*

## Cutting

### BACKGROUND

Cut (1) 13" W strip. From this strip, cut:

**Rectangle A:** (1) 8" H x 13" W rectangle

**Square B:** (2) 5-1/4" H x 5-1/4" W squares

Using the quarter circle "crust" template, cut 2 crusts from Square B (See Page 2 for template and help cutting)

Cut (1) 15-1/2" W strip. From this strip, cut:

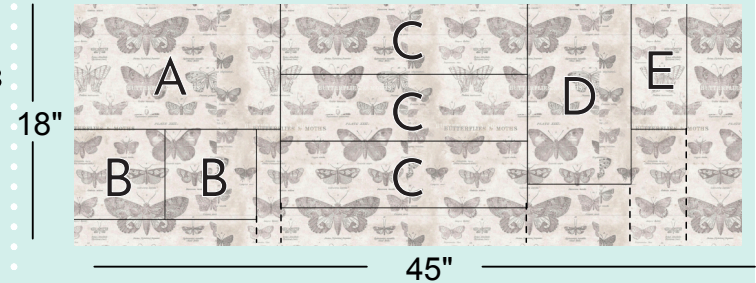
**Rectangle C:** (3) 4-1/2" H x 15-1/2" W rectangles

Cut (1) 6-1/2" W strip. From this strip, cut:

**Rectangle D:** (1) 11-1/2" H x 6-1/2" W rectangle

Cut (1) 4" W strip. From this strip, cut:

**Rectangle E:** (1) 7-3/4" H x 4" W rectangle



### WATERING CAN

*Just like your background fabrics, open up your yardage so that it is 45" across your cutting mat. Then cut as listed below:*

Cut (1) 9-1/2" W strip. From this strip, cut:

**Rectangle F:** (1) 7" H x 9-1/2" W rectangle

Cut (1) 4" W strip. From this strip, cut:

**Rectangle G:** (1) 1" H x 4" W rectangle

From the remaining yardage, cut:

**Shape H:** (2) "filling" templates (see Page 2)



*Save and label scraps for Block 10*

Remember back on Block 1 you cut extra bias strips? Now is the time to gather them!

If you haven't cut them yet, you'll need to cut a total of 47" of 1" bias strips. If cutting from 1/2 yard of fabric, that would be 3 strips.

*See Page 4's note for bias cutting help*



# 1/4 CIRCLE TEMPLATES

**Wondering how in the world to cut these? Here are a few tricks:**

- Use a 28mm rotary cutter
- Keep in mind that the L-shaped piece will be called the "crust" and the pie shaped piece will be called the "filling"
- For video tutorials, visit [RachelRossi.design/quarter-circle](http://RachelRossi.design/quarter-circle)

**Tired of messing with paper templates? Want to do more with this template?**

Visit your local quilt shop or [RachelRossi.design/quarter-circle](http://RachelRossi.design/quarter-circle) to order a hard template set and see what else you can create with it today!

**Templates not printing to scale?**

Make sure in the print dialog box that it says "Scale: 100%" or "Print to Scale"

**Should  
measure  
1"**

**5" Quarter Circle**  
[www.RachelRossi.design](http://www.RachelRossi.design)



**"Crust"**

Cut 2 from  
Background  
B Squares

**"Filling"**  
Cut 2 from  
Watering Can fabric



**5" Quarter Circle**  
[www.RachelRossi.design](http://www.RachelRossi.design)

All seams are assumed to be a scant 1/4" unless noted otherwise.

## Sewing

### Creating Quarter Circle Blocks

1 Start with one Filling H (watering can fabric) and one Crust B (background fabric). Make sure both are cut according to the included template. Lay the Filling piece on a flat surface, right side up. Fold in half to mark the middle. Fold the Crust in half to mark its middle as well.

2 Dab a little bit of glue on the middle edge of the Filling. Match the Filling and Crust middles, right sides together (Image 2).

3 Continue gluing along the curved edge of the Filling piece, matching and pressing on the outer edge. The outer edge piece will wrinkle up a bit, but don't sweat it! Just keep matching the raw edge and gluing (Image 3).

4 Sew along the curved edge using 1/4" seam. Press seam toward the background fabric.

5 Lay your block on a cutting mat. Trim the Background edges first: make sure that there is 1/4" of background fabric on both sides of the curved piece (Image 5).

6 Trim the remaining edges (Image 5) for a block that measures 5" square. Repeat for a total of 2 blocks.

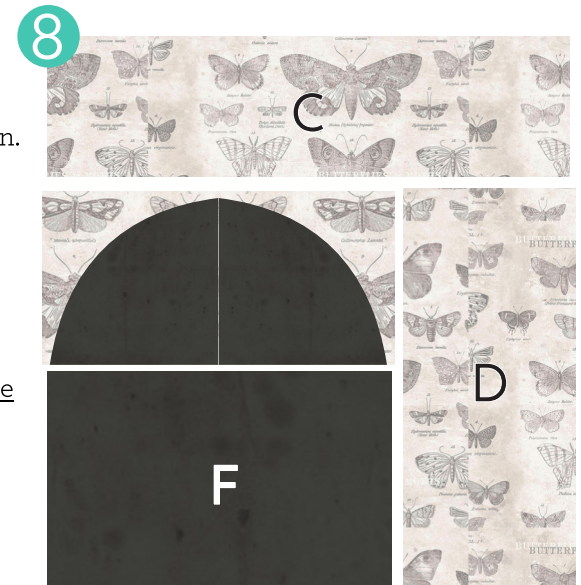
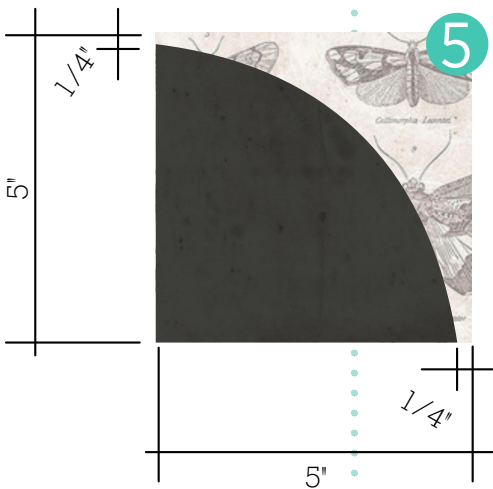
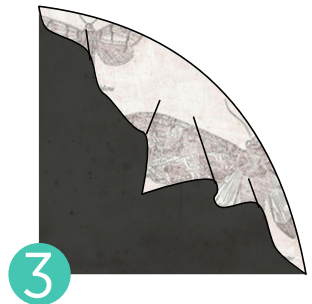
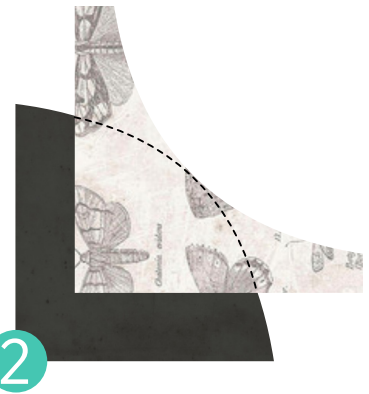
### Creating the Reservoir

7 Stitch together the two quarter circles to create a half circle. Press seams open.

8 Stitch the set from step 7 to the top of Rectangle F. Press seams away from curved piecing. See Image 8.

9 Stitch Block D to the right side of the set created in Step 8 (Image 8). Press seams toward the background fabric. Note: Check to make sure that the curve of the watering can blends right into the body. If not, stitch the seam using a slightly wider 1/4" seam.

10 Stitch Block C to the top of the set created in Step 9 (Image 8). Press seams toward background fabric. Set aside.



For a video tutorial on stitching curves, visit: [www.RachelRossi.design/quarter-circle](http://www.RachelRossi.design/quarter-circle)



If you prefer a video tutorial on cutting bias, check out my full-length video tutorial at [www.RachelRossi.design/bias](http://www.RachelRossi.design/bias)



Make sure when stitching these bias cuts together that you aren't stretching or warping the fabrics as they go through the machine!

Note: In Step 14, I've included extra fabric on the top and bottom to ensure that you have enough grace here, so don't freak out!

I know you're excited to square this up, but wait until you add the handle, THEN trim!



### Creating the Spout

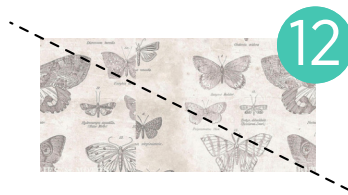
**11** Stitch Strip G to bottom of Strip E. Press seam toward background. Set aside.

### Cutting Bias

*Note: You should have already cut these strips during Block 1. If you need to cut more, follow the instructions from Block 1, Page 2. Cut and join pieces until you have a total of 47" of bias tape.*

### Creating the Spout (continued)

**12** Slice Block A diagonally across corners. (Image 12)



**13** Cut a 17" piece of bias strip, setting aside the excess for Step 18. Insert the Bias Strip between the triangles, stitch, and press seams toward the background fabrics (Image 13a). Trim to straighten the RIGHT SIDE ONLY (Image 13b). This is the side that will meet with the piece in the next step.

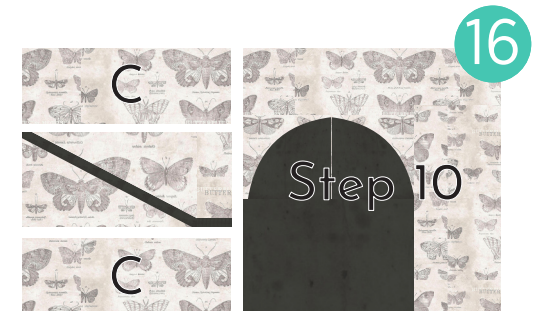
**14** Carefully match the joint on the spout, ensuring that when you stitch at 1/4" seam, there is a clean joint from straight spout to diagonal (Image 14). Press seam away from the diagonal piece.



**15** Trim the entire block to measure 15-1/2" wide x 8" tall, making sure not to trim off the bottom of the block.

**16** Stitch Rectangles C on the top and bottom of the set created in Step 15. Press seams toward background (Image 16).

**17** Stitch the Spout set you just created to the Reservoir Set created in Step 10. Press seams toward the spout (Image 16).





For a video tutorial on bias tape appliqué with iron-on adhesive, visit: [www.RachelRossi.design/bias-applique](http://www.RachelRossi.design/bias-applique)



## Creating the Handle

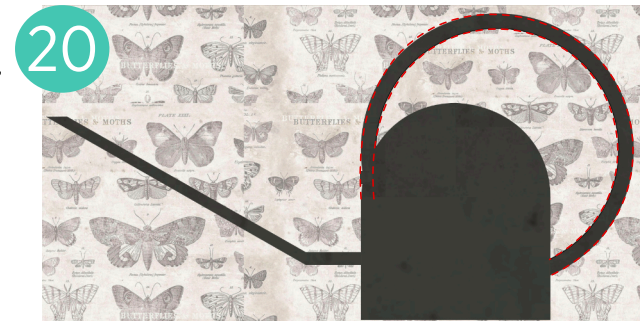
*This month I want you to try another technique with your bias tape! Rather than using the paper template to mold our bias tape, we're going to use the template to trace onto our block and mold the bias tape as we work on top of the fabric. Both glue and iron-on adhesive are excellent options when it comes to bias tape, so this is a great chance to try out and practice both!*

**18** Cut and tape the two templates (below and on Page 6) together, matching black triangles. Using a light box or window, trace onto your quilt block (see Image 20 for placement suggestion). Set aside.

**19** Feed the remaining bias strip (from Step 12) through the bias tape maker. As you feed the bias tape, also feed the iron-on-adhesive tape through, making sure that the paper side is hitting the iron and tape is adhering to the fabric. Press (no steam).

**20** Lay the bias tape on top of the traced design (placement suggestion, Image 20). Peel off the paper, turn your iron's steam, and "mold" the bias tape to match the tracing as you go. Trim 1/4" past each end, fold under, and let cool. I suggest leaving a little bit extra—you can always trim later!

**21** Turn off your iron's steam. Carefully flip the ends of your bias handle up, clip corners, and spread Elmer's glue on the back side. Fold the raw edges under, and carefully press to set (no steam).



**This box  
should  
measure at 1"**  
If it doesn't,  
please re-print  
at 100% scale

*Set your sewing machine to your preferred appliqué stitch. I prefer a small zig zag and will often use monofilament thread to make it look hand stitched. For full instructions on this technique, please visit: [www.RachelRossi.design/invisible](http://www.RachelRossi.design/invisible). Other options include blanket stitches, or even a straight stitch (especially effective with an edgestitch foot).*

**22** Place a generously sized square of Stabilizer behind your fabric (the layers should go: appliqué, block, then stabilizer). Starting on the inside of your curve, carefully stitch around your piece until completely attached.

**23** Tear away excess stabilizer and square up block to measure 15-1/2" tall x 30-1/2" wide.

*Have leftover bias strips? Save them for block 10!*

*Wondering when we'll add those appliqué leaves? These will be added in Month 12 - don't worry!*



**This box  
should  
measure at 1"**  
If it doesn't,  
please re-print  
at 100% scale