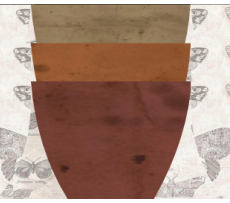


BLOCK 5 | PLANTER

Pattern by Rachel Rossi



Cutting

Level: Beginner

Techniques:

- Traditional Piecing
- Curved Piecing

Supplies:

- Shorthand Template Set (paper templates included)
- Elmer's Disappearing Purple Glue Stick

FABRIC REQUIREMENTS

All fabrics are assumed to be 45" wide, 100% quilting cotton:

-Background: 1/2 yard

-Terracotta 1,2,3, and 4:

From the "Getting Started" portion of this pattern, grab the pieces labeled "Block 5" from Section C.

or

-Terracotta 1: fat quarter

-Terracotta 2: fat quarter

-Terracotta 3: fat quarter

-Terracotta 4: fat quarter

The paper version of my Shorthand Template is included in this pattern on Page 2. Use that to cut A and D shapes or order a hard set from my shop!

BACKGROUND

Cut (2) 6-7/8" H x WOF strips:

Shape A: Fold the strips in half and use the Shorthand Template to cut 5 A Shapes (for a total of 10 A shapes)
See page 2 for templates and help with cutting

Shape D: Keeping the strip folded in half, use the Shorthand Template to cut 5 D Shapes (for a total of 10 mirrored D shapes)
See page 2 for templates and help with cutting

Cut (1) 12-1/4" W strip. From this strip, cut:

Rectangle B: (1) 2-1/2" H x 12-1/4" W rectangle

Save and label scraps for Block 10



TERRACOTTA

These fabrics will already have been cut in the "Getting Started" portion of the program. It should be labeled as Block 5 from Section C.

Stack 3 Terracotta fabrics and cut:

Cut (1) 4-3/4" W strip, from this strip cut:

Rectangle C: (1) 6-1/2" H x 4-3/4" W rectangle (for a total of 3)

Fold the remaining fabric in half, wrong sides together and cut:

Shape D: (1) D shape using the Shorthand Template (for a total of 6 mirrored D shapes)

From the remaining 1 Terracotta fabric, cut:

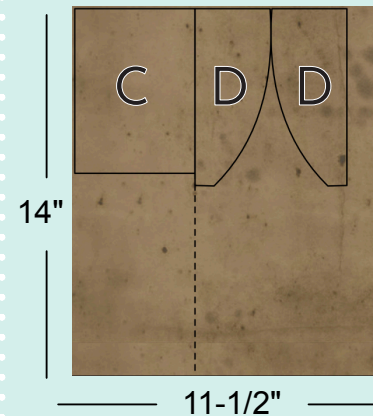
Cut (1) 4-3/4" W strip, from this strip cut:

Rectangle C: (2) 6-1/2" H x 4-3/4" W rectangles

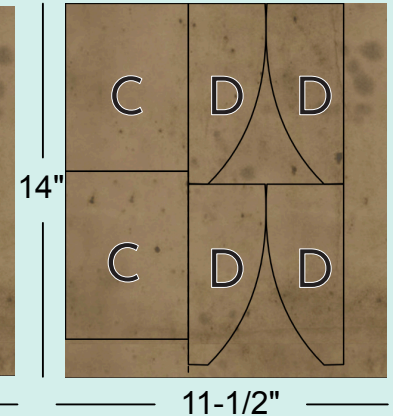
Fold the remaining fabric in half, wrong sides together and cut:

Shape D: (2) D shapes using the Shorthand Template (for a total of 4 mirrored D shapes)

From 3 of the fabrics cut:



From 1 of the fabrics cut:



All seams are assumed to be a scant 1/4" unless noted otherwise.

It might seem odd, but make sure to stitch the Background D piece to Background A piece first, this will allow the planter edge to be rounded out.

Sewing

Creating the Planter - Curved Piecing with the Shorthand Template

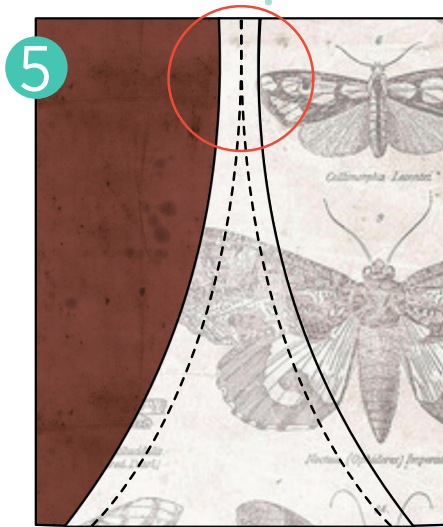


1 Start with one Piece A (Background Fabric) and one Piece D (Background Fabric). Lay the D piece on a flat surface, right side up. Dab a small amount of glue on the curved edge of the D piece.

2 Place Piece A on top of Piece D, right sides together (Image 2). Match the top of Piece A to the widest corner of Piece D.

3 Glue, starting at the top of Piece A, matching and pressing on the outer edge. The A piece will wrinkle up a bit, but don't sweat it! Just keep matching the raw edge and gluing (Image 3). You'll want to see a little bit of overhang at the bottom of the pieces.

4 Sew along the curved edge using 1/4" seam. Press seam away from Shape A.



5 Using a Terracotta Piece D, repeat steps 1–4 on the remaining side of the set you created in Step 4. Note: as you sew the stitches toward the top of Piece A, keep in mind that your stitches should overlap as you near the edge. This may vary a bit between different quilters, but be consistent with your blocks (Image 5).

Repeat to create the number of blocks shown in the chart below:

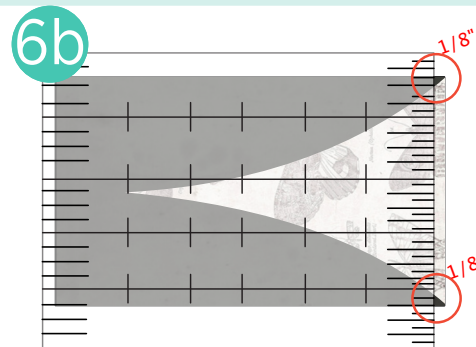
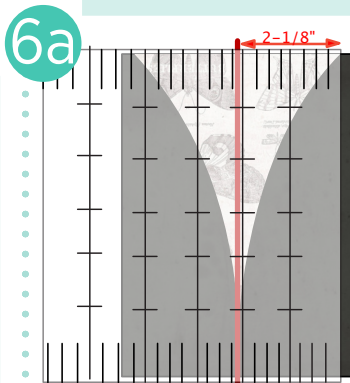
Create 5 Blocks
(Various Terracotta fabrics)



Create 5 Blocks
(Various Terracotta fabrics)



Prefer a video for using the Shorthand Templates? Visit www.RachelRossi.design/shorthand for video tutorials.

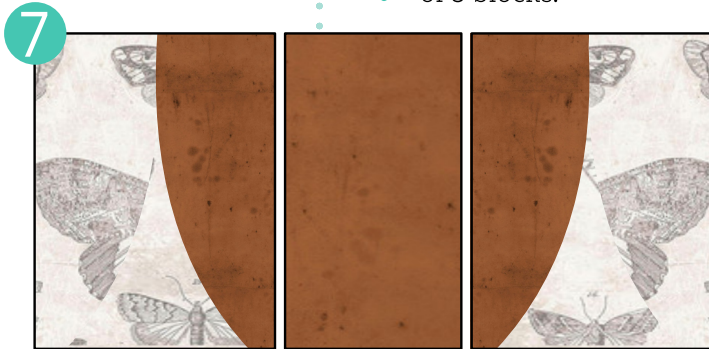


6 Trim each block to measure 6-1/2" tall x 4-1/4" wide: Find the center of each triangle and crease. Measure 2-1/8" away from the long edge and trim (Image 6a). Repeat on the other long side.

Trim the BOTTOM of the block and ensure that there is 1/8" of D fabric on either side of the triangle edge (Image 6b). Finally, trim the TOP of the block so that it measures 6-1/2" tall.

Creating the Planter

7 Match each pair of curved blocks with the matching C Rectangle. Stitch together along long sides (Image 7). Repeat for a total of 5 blocks.



8 Set aside TWO planter blocks. DO NOT CUT THEM IN THIS STEP. On the remaining THREE blocks, cut off the top 1" of each, discard (Image 8). Then cut off the top 2-1/2" of each and set aside for Step 9. Set the bottom aside for a bonus project at the end of the program!



Step 9 Trick:

To get a nicely stacked set of pots, match your seams and pin before stitching!

Completing the Set

9 Stitch together two 2-1/2" planter strips and one uncut planter block (Image 9). Press seams up towards the top of the block.



The final block should measure 24" W x 10-1/2" T

10 Repeat step 9, joining one 2-1/2" planter strip and one uncut planter block (Image 10). Press seams up.

11 Add Rectangle B to the top of your shorter planter stack. Press seams toward background.



12 Square up your blocks to measure 12-1/4" wide. Then stitch together (Image 11). Press seams open.



SHORTHAND TEMPLATES

Wondering how in the world to cut these? Here are a few tricks:

- Use a 28mm rotary cutter
- Keep in mind that I will refer to these as shapes A and D throughout the pattern
- For video tutorials, visit RachelRossi.design/shorthand

Want to do more with this template or see what else you can create?

Visit www.Rachelrossi.design/shorthand to see video tutorials, all of my paid (and free!) patterns that use this template, and order a hard template set for yourself!

Templates not printing to scale?

Make sure in the print dialog box that it says "Scale: 100%" or "Print to Scale"

**Should
measure
1"**

For more help visit:
www.RachelRossi.design/print-to-scale

