



# BLOCK 6 | DIG

Pattern by Rachel Rossi

## Cutting

### Level:

Adventurous Beginner

### Techniques:

- Traditional Piecing
- Curved Piecing

### Supplies:

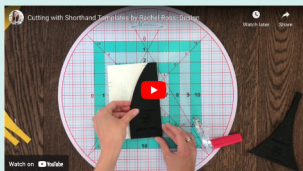
- Shorthand Templates (paper templates included)
- 3 black buttons (these will be sewn on once the quilt is quilted!)
- Elmers Disappearing Purple Glue Stick

## FABRIC REQUIREMENTS

All fabrics are assumed to be 45" wide, 100% quilting cotton

- Background:** 1/2 yard
- Trowel:** 1/3 yard
- Handle:** Scraps or 1 fat eighth

Need help cutting with the Shorthand Template? Check out my videos at [www.RachelRossi.design/shorthand](http://www.RachelRossi.design/shorthand)



## BACKGROUND

Please refer to the cutting chart below, and cut in the order listed:

Cut (1) 4-1/4" W strip. From this strip, cut:

**Rectangle B:** (2) 2-1/2" H x 4-1/4" W rectangles

Cut (1) 2-3/8" W strip. From this strip, cut:

**Rectangle C:** (2) 2-1/2" H x 2-3/8" W rectangles

Cut (1) 7-1/2" W strip. From this strip, cut:

**Rectangle E:** (2) 3-1/4" H x 7-1/2" W rectangles

Cut (1) 7" W strip. From this strip, cut:

**Rectangle F:** (2) 5" H x 7" W rectangles

Take your remaining fabric and cut a 6-7/8" strip lengthwise

**Shape A:** Cut (6) A Shapes using the Shorthand Template or included paper template

Using the remaining fabric, cut (1) 3-3/4" W strip. From this strip, cut:

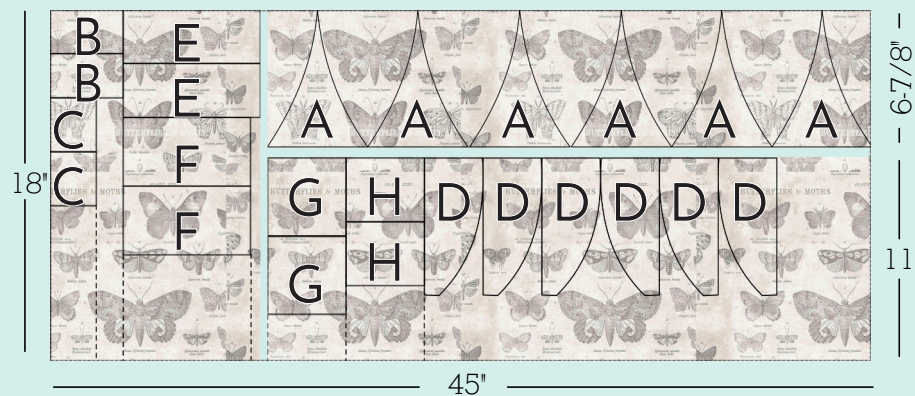
**Rectangle G:** (2) 5" H x 3-3/4" W rectangles

Cut (1) 4" W strip. From this strip, cut:

**Rectangle H:** (2) 3-1/4" H x 4" W rectangles

Fold the remaining strip in half, right sides together:

**Shape D:** Use the D template to make (3) D shapes on the folded strip (for a total of 6 mirrored D shapes)



## TROWEL

Cut (1) 4-1/4" W strip. From this strip, cut:

**Rectangle I:** (3) 2-1/2" H x 4-1/4" W rectangles

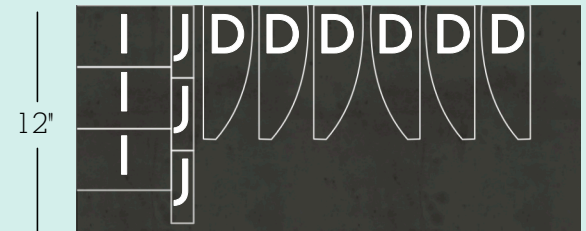
Cut (1) 1" W strip. From this strip, cut:

**Rectangle J:** (3) 3-1/4" H x 1" W rectangles

Fold the remaining strip in half, right sides together:

**Strip D:** Use the D template to make (3) D shapes on the folded strip (for a total of 6 mirrored D shapes)

Save and label scraps for Block 10



12"

## HANDLE

Cut (1) 1-1/2" W strip. From this strip, cut:

**Rectangle K:** (3) 5" H x 1-1/2" W rectangles



# SHORTHAND TEMPLATES

**Wondering how in the world to cut these? Here are a few tricks:**

- Use a 28mm rotary cutter
- Keep in mind that I will refer to these as shapes A and D throughout the pattern
- For video tutorials, visit [RachelRossi.design/shorthand](http://RachelRossi.design/shorthand)

**Want to do more with this template or see what else you can create?**

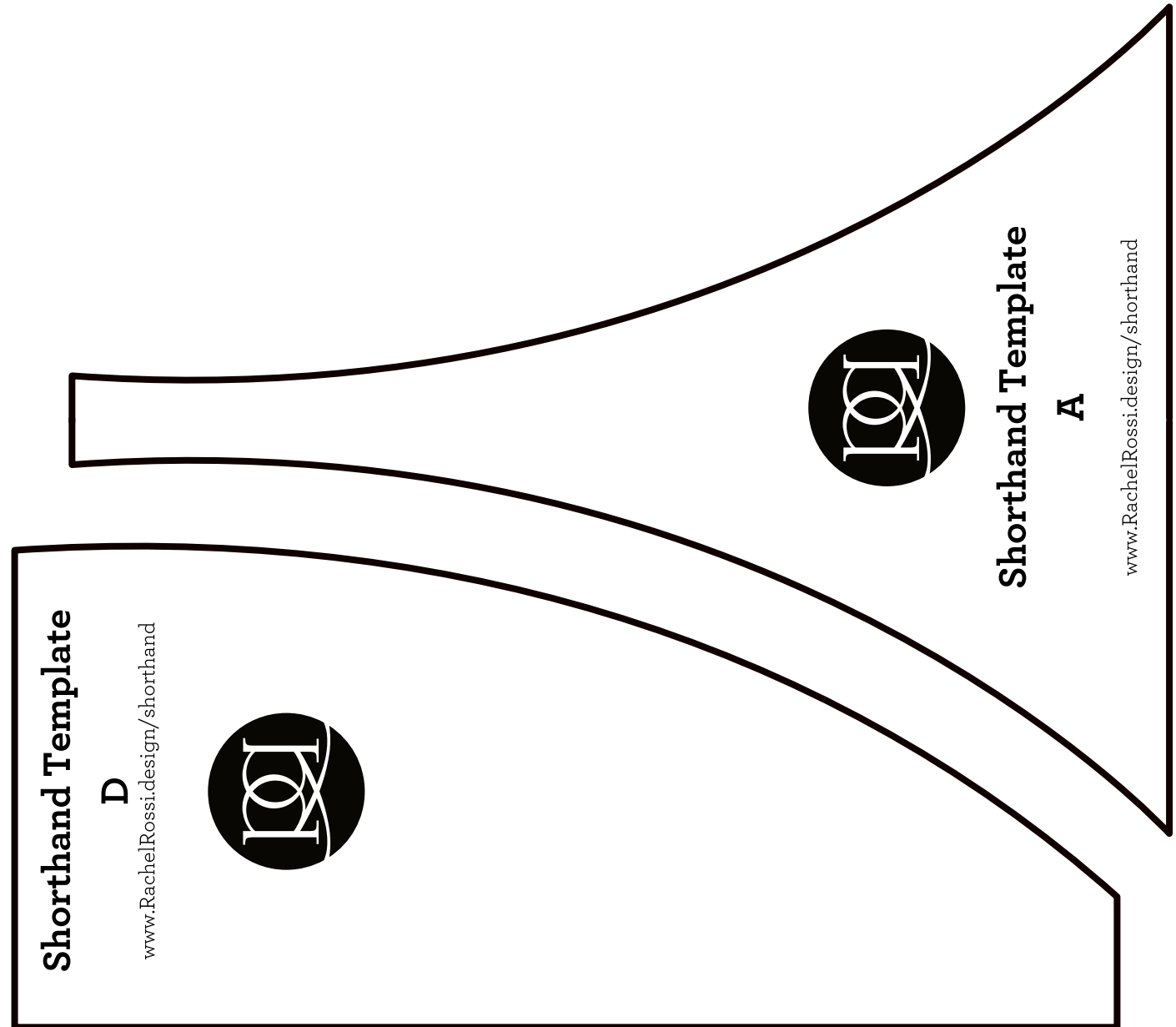
Visit [www.Rachelrossi.design/shorthand](http://www.Rachelrossi.design/shorthand) to see video tutorials, all of my paid (and free!) patterns that use this template, and order a hard template set for yourself!

**Templates not printing to scale?**

Make sure in the print dialog box that it says "Scale: 100%" or "Print to Scale"

**Should  
measure  
1"**

For more help visit:  
[www.RachelRossi.design/print-to-scale](http://www.RachelRossi.design/print-to-scale)

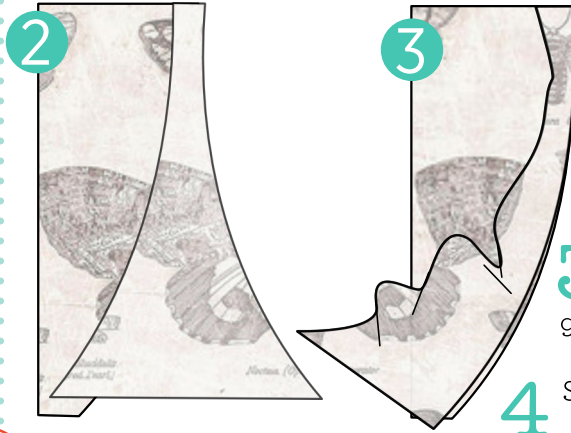


All seams are assumed to be a scant 1/4" unless noted otherwise.

It might seem odd, but make sure to stitch the Background D piece to Background A piece first, this ensures the trowel edge is rounded out.

## Sewing

### Creating the Trowel - Curved Piecing with the Shorthand Template

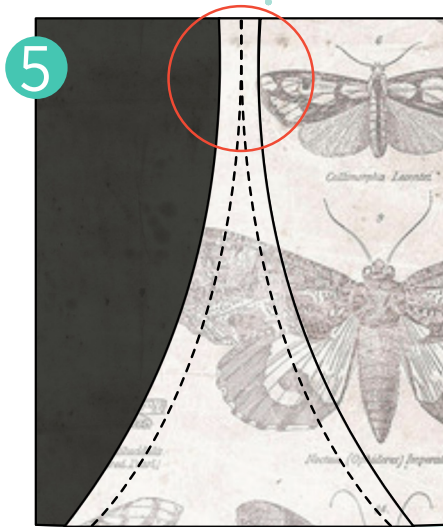


**1** Start with one Piece A (Background Fabric) and one Piece D (Background Fabric). Lay the D piece on a flat surface, right side up. Dab a small amount of glue on top of the curved edge of the D piece.

**2** Place Piece A on top of Piece D, right sides together (Image 2). Match the top of Piece A to the widest corner of Piece D.

**3** Glue, starting at the top of Piece A, matching and pressing on the outer edge. The A piece will wrinkle up a bit, but don't sweat it! Just keep matching the raw edge and gluing (Image 3). You'll want to see a little bit of overhang at the bottom of the pieces.

**4** Sew along the curved edge using 1/4" seam. Press seam away from Shape A.



**5** Using a Trowel Piece D, repeat steps 1–4 on the remaining side of the set you created in Step 4. Note: as you sew the stitches toward the top of Piece A, keep in mind that your stitches should overlap as you near the edge. This may vary a bit between different quilters, but be consistent with your blocks (Image 5).

Repeat Steps 1–5 five more times to create the number of blocks shown in the chart below:

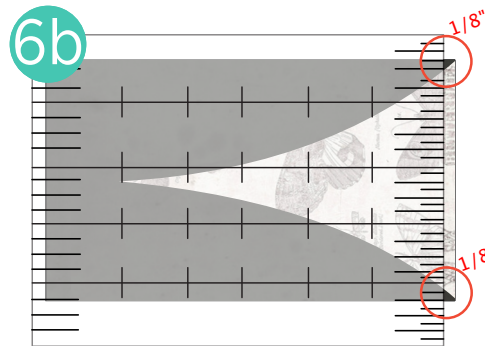
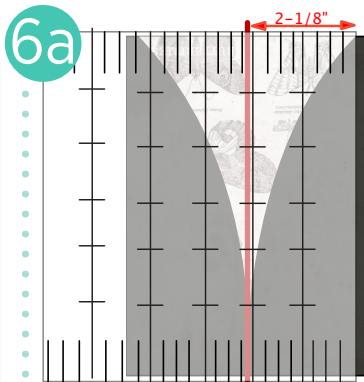
Create 3 Blocks



Create 3 Blocks



Need help piecing with the Shorthand Template? Check out my videos at [www.RachelRossi.design/shorthand](http://www.RachelRossi.design/shorthand)



**6** Trim each block to measure 6-1/2" H x 4-1/4" W: Find the center of each triangle and crease. Measure 2-1/8" away from the long edge and trim (Image 6a). Repeat on the other long side.

Trim the **BOTTOM** of the block and ensure that there is 1/8" of D fabric on either side of the triangle edge (Image 6b). Finally, trim the **TOP** of the block so that it measures 6-1/2" H

9



Mark the center of each trowel handle before stitching to the rest of the block! Either press a crease or mark with an erasable fabric marker the center of each I Block (step 8), J block (step 11), and K block (step 13) before stitching to the row. This will help you keep things centered.

The final block should measure 15-1/2" H x 23" W

*Wondering when those dots come in at the top of the handle? We'll add those buttons after quilting!*

7

Stitch together the blocks you've created to build the bottom of your block, shown below. Press seams open:



### Completing the Row

8

Stitch together C, I, and B blocks in the order shown below (Image 8). Press seams away from background.



9

Stitch together the two block sets created in Steps 7 and 8, matching seams (see Image 9 above, left). Press seams up, away from the curved piecing.

10

Stitch H, J, and E blocks together as shown below (Image 10). Press seams away from background.



11

Carefully stitch this row to the top of your already completed rows (Image 9 above, left), making sure that the shaft (Block J) is centered on the Trowel (Block I): Press seams down, away from the handle.

12

Stitch together G, K, and F blocks to create the handles as shown below (Image 12). Press seams toward background fabrics.

12



13

Carefully stitch the handle row to the blocks you've already created (Image above, left), making sure that the handle (block K) is centered on the shaft (block J). Press seams toward handle row.

*You did it!*  
TELL THE WORLD

Use #PottingTableQuilt  
on Instagram and Facebook  
and tag @DesignsbyRR