



BLOCK 8 | SMALL POTS

Pattern by Rachel Rossi

Level: Beginner

Techniques:

- Traditional Piecing
- Strip Piecing

OR

- Foundation Paper Piecing

Supplies:

Traditional Piecing:

- Erasable Fabric Marker

Foundation Paper Piecing:

- Freezer Paper
- Add-a-quarter Ruler (opt)
- Light Box

FABRIC REQUIREMENTS

All fabrics are assumed to be 45" wide, 100% quilting cotton

- Background:** 1/2 yard
- Terracotta 1,2,3, and 4:** From the "Getting Started" portion of this pattern: Blocks labeled :Block 8" From Sections A and D. OR
- Terracotta 1:** 1/4 yard
- Terracotta 2:** 1/4 yard
- Terracotta 3:** 1/4 yard
- Terracotta 4:** 1/4 yard

All seams are assumed to be a scant 1/4" unless noted otherwise.

*This block has two sewing options! You can do traditional piecing OR Foundation Paper Piecing. If you're planning on using FPP for more difficult blocks (like the Snipper Block), I suggest practicing on this nice and simple one! **Skip to Page 4 for FPP instructions.***

Cutting - Traditional Piecing

BACKGROUND

Cut (2) 5" W strips, and from these strips cut:

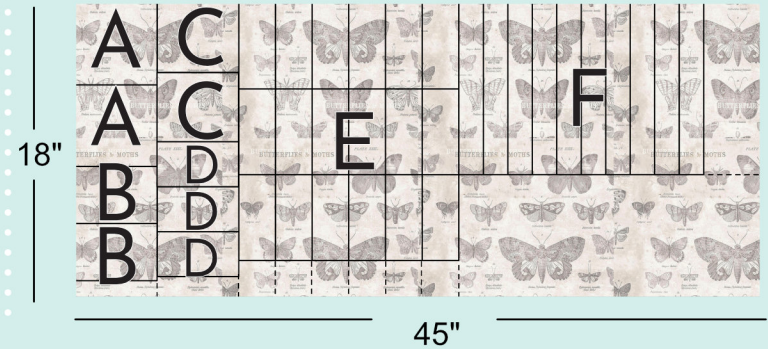
- Square A:** (2) 5" H x 5" W squares
- Rectangle B:** (2) 3-1/2" H x 5" W rectangles
- Rectangle C:** (2) 4-1/4" H x 5" W rectangles
- Rectangle D:** (3) 2-3/4" H x 5" W rectangles

Cut (6) 2-1/4" W strips, and from these strips cut:

- Rectangle E:** (18) 5-1/4" H x 2-1/4" W rectangles

Cut (1) 10-1/2" TALL strip

- Rectangle F:** (10) 10-1/2" H x 1-1/2" W rectangles



TERRACOTTA

The yardage for these Terracotta fabrics will already have been cut in the "Getting Started" portion of the pattern. You'll need to gather the pieces labeled "Block 2" from Sections A and D.

From Section A cut:

- Lips:** (8) 1-1/4" H x WOF strips (2 of each Terracotta 1,2,3, and 4 fabrics, for a total of 8 strips)

From Section D cut:

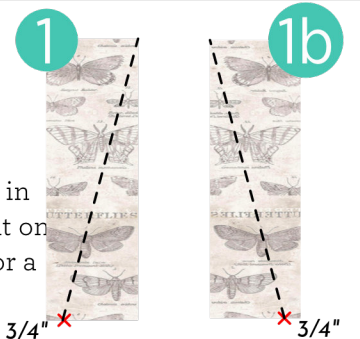
Cut (2) 5" W strips, and from each of the 4 terracotta fabrics. From these strips, cut:

- Pots:** (9) 5" H x 5" W squares

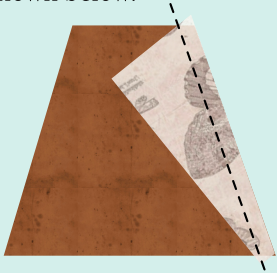
Sewing - Traditional Piecing

Piecing the Small Terracotta Block

1 Lay one Rectangle E on a flat surface, wrong side up. Mark 3/4" on one short end corner as shown in Image 1. With your ruler, create a line from the opposite corner to your mark, cut (Image 1). Repeat on the second rectangle, making sure to cut in the opposite direction (Image 1b). Repeat on all E blocks for a total of 36 triangles. **Set aside the wider triangles for Step 3 and discard the small ones.**



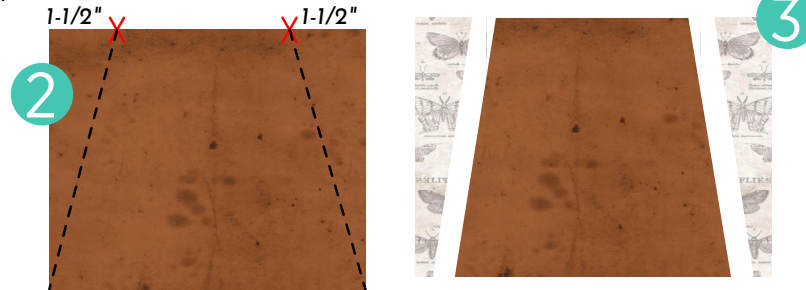
You'll know things are lined up correctly if your needle lands in the valley created by the overlapping fabrics as shown below:



IF you are using directional prints, make sure that they are going in the correct direction! These pots will be upside down in the final layout.

2 In a similar manner, mark the top of Terracotta Square 1-1/2" from each top corner (if you're using directional fabrics, keep in mind that this is the top of the block, but the bottom of the pot). Mark a line from the bottom corner to the mark you've made on each side and cut along the line (Image 2).

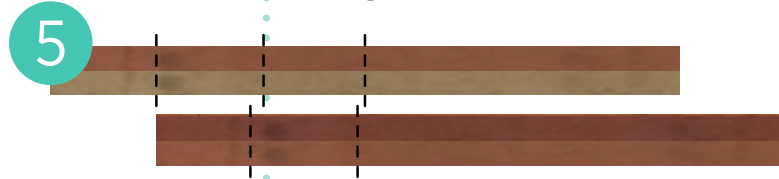
3 Stitch one Triangle E to each side of Terracotta Pot. Make sure that you are matching diagonal cuts (Image 3). Press seams toward the background fabric.



4 Trim the sides of the of the block first to 5" W. Then trim the bottom of the block to measure 4-1/2" tall x 5" wide **MAKING SURE** that there is 1/2" of background fabric on either side of the bottom of the block. Repeat Steps 1–4 on the remaining Terracotta Pot square and Rectangle Es for a total of 9 blocks.

Piecing the Terracotta Lips

5 Lay out two sets of the Terracotta Lip strips, each with two different strips (Image 5). Stitch together along long edges and press seams in the same direction.



6 From these two strip sets, cut a total of five sections measuring 5" wide as shown in Image 5 (you'll cut 2 pieces from one strip and 3 pieces from the other). The leftover will be used in Step 7.

7 Piece the remaining strips from Step 6 together for a strip set of 4 (one set will be shorter than the other, don't sweat it!). Press seams in the same direction. Cut these down into two pieces measuring 5" wide (Image 7). Set aside excess.



8 Taking three more full-length Lip Strips, lay out a set of 3 along long edges. Before stitching, make sure that there is a variety of top and bottom strips compared to the top and bottom strips in previous strip sets. This will ensure that you can have a matching pot and lip for each fabric selection. Stitch and press seams in same direction. Cut down into 5 pieces measuring 5" (Image 8). Set aside excess.



If you're starting to lose track, you should have the following strip sets:

2 sets of **2 strips**

2 sets of **3 strips**

2 sets of **4 strips**

3 sets of **5 strips**

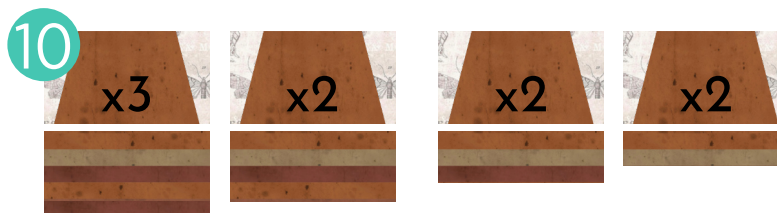
Finished blocks in Step 11 should measure 10-1/2" T x 5" W

Your stitched row should measure 51" W x 10-1/2" H. Trim 1/4" off of each short end to get 50-1/2" W

9 Matching long edges, piece together three strips of 3 and three strips of 2 (from Step 6), for a total of 3 strip sets made up of 5 strips (Image 9).

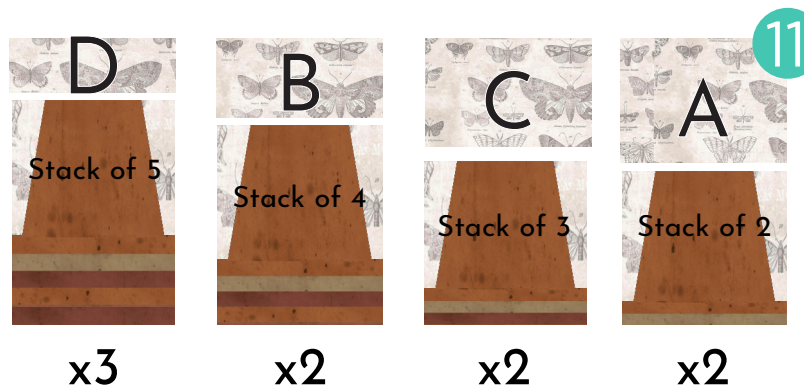


10 Stitch one strip set to the bottom of a Terracotta block, making sure that the lip touching the pot matches the pot. Repeat for the remaining blocks. Press seams toward strip set. Repeat for a total of 9 blocks (Image 10).



Completing the Row

11 Match Terracotta blocks to A,B,C, and D Rectangles (Image 11). Stitch together, making sure that you stitch Background rectangles to the top of the block (but the bottom of the pot) *If you're using directional fabrics, pay attention here!* Repeat to complete the total number listed below each block. Press seam away from pot.



Adding Sashing

12 Lay out blocks as shown in the diagram below with Rectangle F placed in-between each Terracotta block. Stitch together along long sides and press seams toward background F Rectangles (Image 12).



Using directional fabric? Check out my tutorial on FPP and Directional Fabrics!

www.RachelRossi.design/directional-fpp



Do you like to pre-cut your FPP pieces? You can use the fabric cut in the chart on page 1! Each template is labeled with the coordinating letter number.

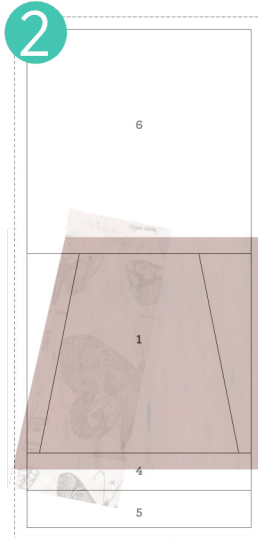
Your stitched row should measure 51" W x 10-1/2" T. Trim off 1/4" on each short edge so that it measures 50-1/2" W

You did it!
TELL THE WORLD

Use #PottingTableQuilt on Instagram and Facebook and tag @DesignsbyRR

Sewing - Foundation Paper Piecing

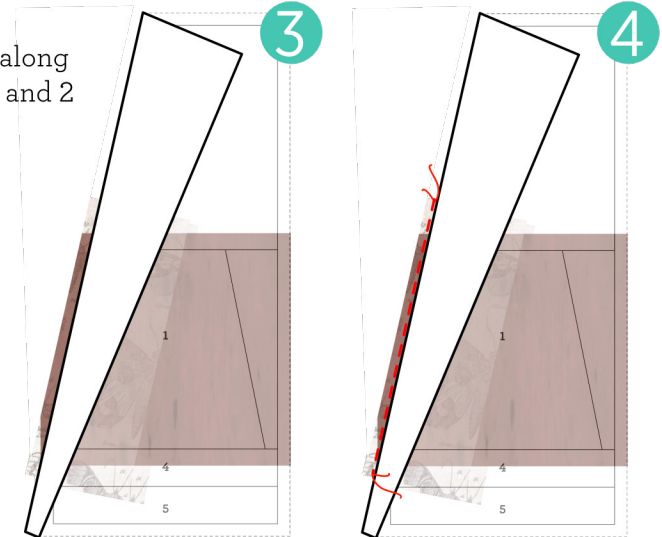
1 Trace your printed template onto the dull side of your freezer paper with pencil. Fold along all solid black lines.



2 Each piece is labeled with a number in the order that it is to be assembled. Start by cutting out a piece of fabric #1 (terracotta): cut a piece about 1/2" bigger than the template on all sides. Place fabric piece 1 onto the shiny side of your freezer paper, wrong side against shiny side (Image 2). Press to temporarily hold in place (make sure there is no steam in the iron): Make sure to center it in the space provided, leaving at least 1/4" on all sides. Turn the piece over and fold back the template along the line between spaces 1 and 2 (Image 3). Trim excess fabric to 1/4" (this will be your seam allowance).

3 Place piece 2 against piece 1, right sides together, along the seam allowance you created between section 1 and 2 on the freezer paper template (Image 3).

4 Starting and finishing about 1/4" past the end of each line, stitch along the folded edge of the template through both pieces of fabric, but not through the template. (Image 4).



5 Flatten out the template and fabric. Press seams toward Piece 2. Your seams should face the shiny side of the template paper. Press pieces 1 and 2 to ensure that the template sticks to it.

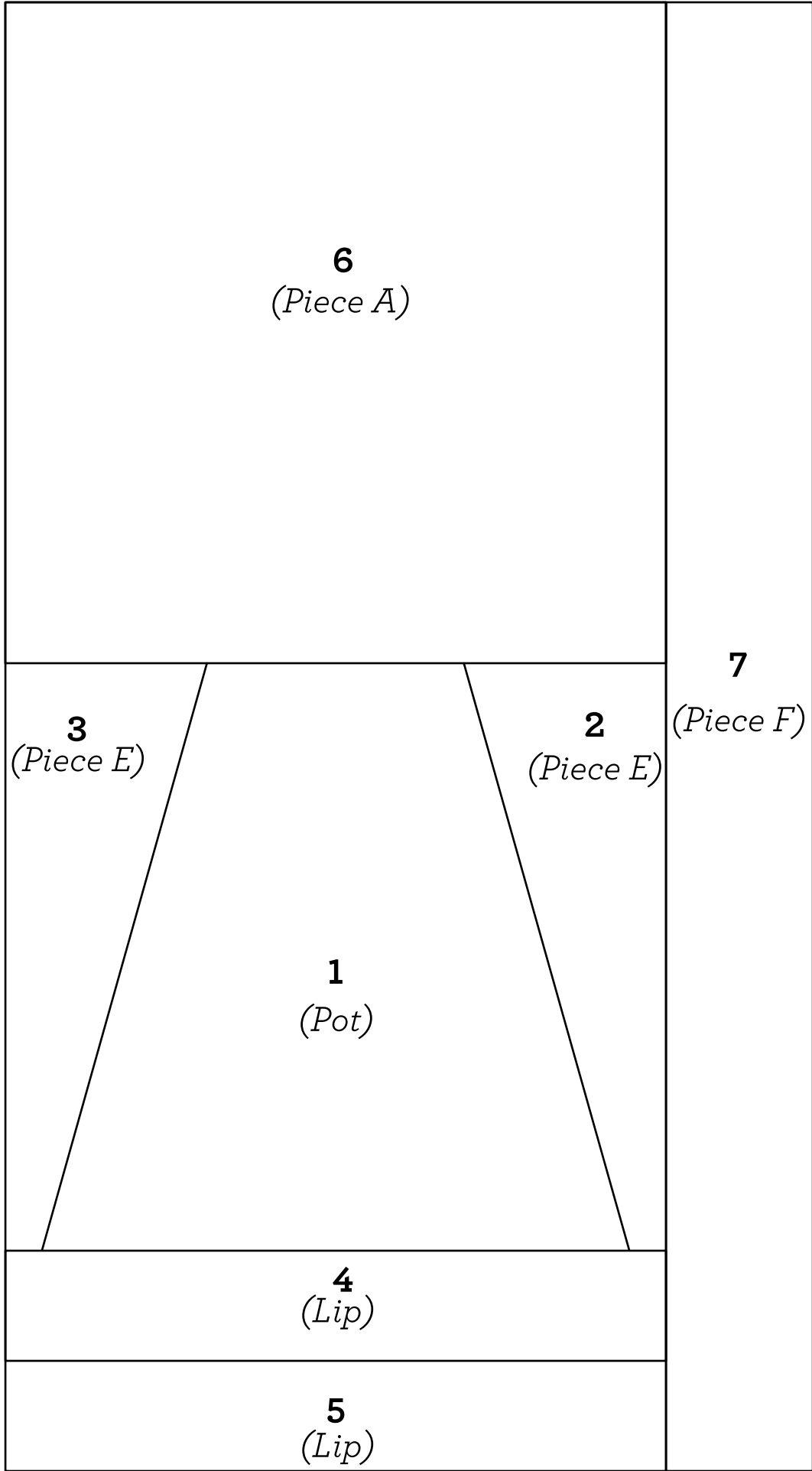
6 Repeat steps 1–5 on the remaining pieces, being sure to follow the numbers in the correct order, always pressing towards the newest piece.

7 Once all blocks are made, trim all edges along the dotted line on your template. Piece together using 1/4" seam as shown in the layout below (Image 7). Add the last Rectangle F to the right hand side of the row. Press seams toward background fabric:



This box should measure at 1" If it doesn't, please re-print at 100% scale

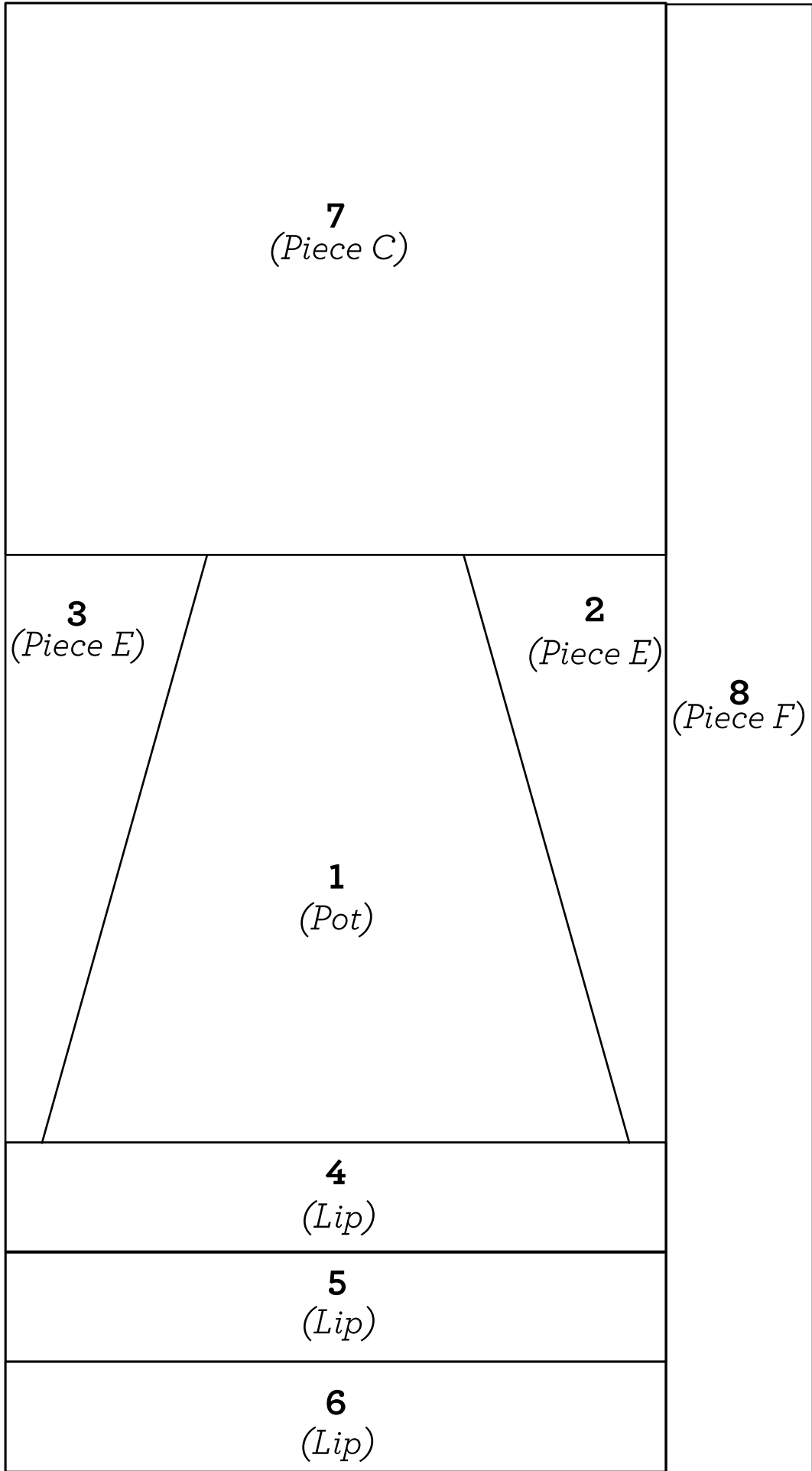
Make 2 Blocks



Make 2 Blocks

This box should measure at 1"
If it doesn't, please re-print at 100% scale

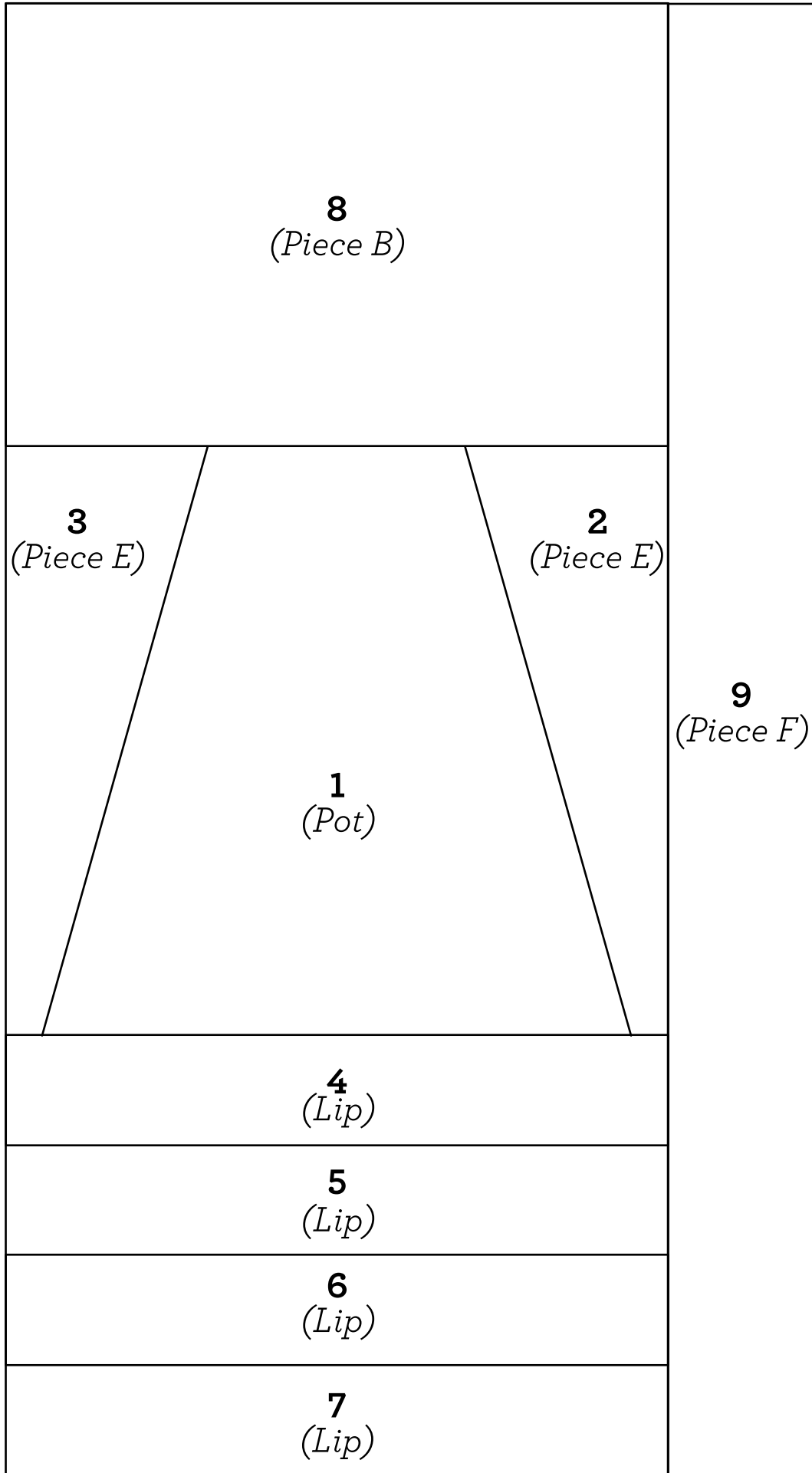
Make 2 Blocks



Make 2 Blocks

This box
should
measure at 1"
If it doesn't,
please re-print
at 100% scale

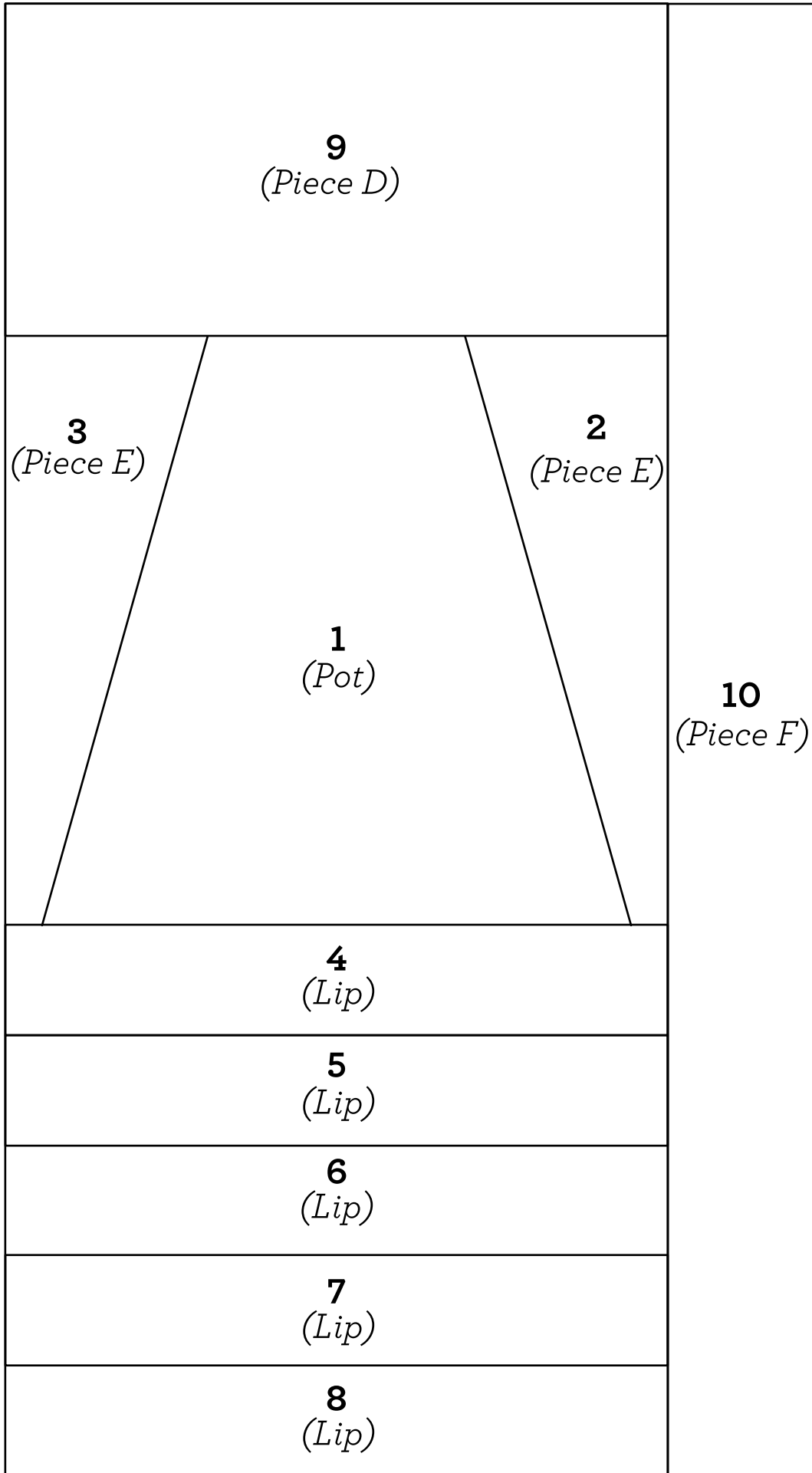
Make 2 Blocks



Make 2 Blocks

This box should measure at 1"
If it doesn't, please re-print at 100% scale

Make 3 Blocks



Make 3 Blocks