

# BLOCK 9 | TOPPLE

Pattern by Rachel Rossi

**Level:** Beginner

**Techniques:**

- Foundation Paper Piecing
- Invisible Machine Stitch Appliqué

**Supplies:**

- Erasable Fabric Marker
- Freezer Paper
- Monofilament Thread
- Elmer's Disappearing Purple Glue Stick
- That Purple Thang

## FABRIC REQUIREMENTS

*All fabrics are assumed to be 45" wide, 100% quilting cotton*

**-Background:** 1/2 yard

**-Terracotta:**

From the "Getting Started" portion of the pattern: Blocks labeled "Block 9" From Section B.

**-Leaf and Vine:** Left overs from Block 3 construction or 1/4 yard

For a video tutorial on Invisible Machine Stitch Appliqué, visit: [www.RachelRossi.design/invisible](http://www.RachelRossi.design/invisible)



## Cutting

### BACKGROUND

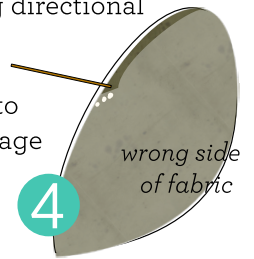
We will be using a large piece from the listed 1/2 yard and scraps from previous blocks to complete this FPP block, gather your background scraps!

## Sewing

### Adding Leaves — Invisible Machine Stitch Appliqué

1 Print and tape included templates together. Trace Piece 8 (largest) Template onto the dull side of your freezer paper. Press this template onto the RIGHT side of your background fabric and use this template to cut out. If you're using directional fabrics, pay attention here! Remove the freezer paper from the fabric. Set aside cut fabric and template.

- 2 In the same way, trace leaf template onto dull side of freezer paper. Cut out and press to right side of fabric. Cut fabric around leaf template, leaving 1/8" of fabric showing (Image 2). Carefully clip all curves, making sure to not cut all the way into your 1/8" allowance.
- 3 On the wrong side of the fabric, apply a small amount of glue around the perimeter of the piece, in small sections at a time, 1/8" from the edge.
- 4 Using That Purple Thang (a wooden skewer or toothpick works well for this), gently turn the seam allowance onto the back of the piece and onto the glue so that the white freezer paper edge barely shows on all edges (Image 4). Repeat for all pieces.



5 Place the appliqué onto the Piece 8 fabric (cut in Step 1). Use the dotted lines on the template sheet for a placement guide. Then use your glue stick to hold the templates in place while sewing. Remove freezer paper and trim leaves that hang over the raw edge.

6 Place Stabilizer below quilt block for a smooth appliqué. Then, using a 60/80 Microtex needle and mono-filament thread (paired with a cotton bobbin thread), set your machine to a zig zag stitch. Carefully stitch around the pieces. The stitch length should be small and the bite should be narrow (about 1/8" [My machine is set to 1 on the stitch length and 1 on the stitch width]). Try to stitch as close as you can to the appliqué piece (Image 6). Set aside.



### Leaf and Vine

Gather leftover yardage from Block 3 of both Leaf and Vine fabrics.

*Save and label leftovers for Month 12*

### Terracotta

*These fabrics will already have been cut in the "Getting Started" portion at the beginning of the program. You'll need to gather the pieces labeled Block 9 from Section B.*

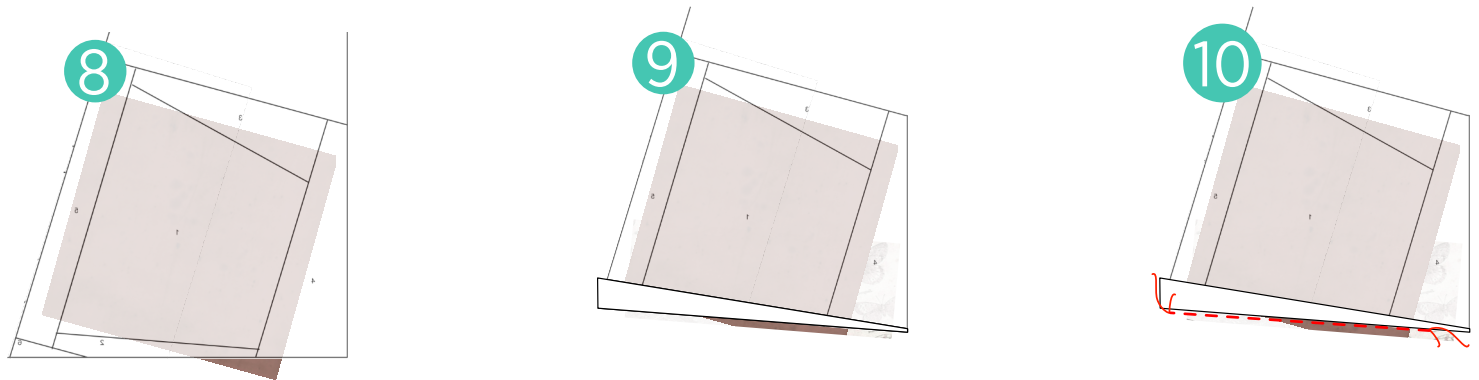
## Foundation Paper Piecing (Freezer Paper Method)

7 Trace your remaining printed template piece onto the dull side of your freezer paper with pencil or ink. Fold along all solid black lines.

8 Each piece is labeled with a number in the order that it is to be assembled. Start by cutting out a scrap piece of fabric #1 (terracotta): cut a scrap piece about 1/2" bigger than the template on all sides. Place fabric piece 1 onto the shiny side of your freezer paper, wrong side against shiny side (Image 8). Press to temporarily hold in place (no steam in iron). Make sure to center it in the space provided, leaving at least 1/4" on all sides. Turn the piece over and fold back the template along the line between spaces 1 and 2 (Image 9). Trim excess fabric to 1/4" (this will be your seam allowance).

9 Place piece 2 against piece 1, right sides together, along the seam allowance you created between section 1 and 2 on the freezer paper template (Image 9).

10 Starting and finishing about 1/4" past the end of each section, stitch along the folded edge of the template through both pieces of fabric, but not through the template. (Image 10).



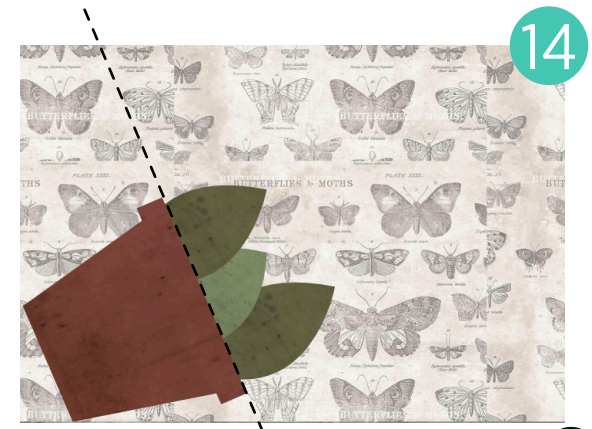
11 Keeping the template folded out of the way, trim excess fabric to a 1/4" seam.

12 Flatten out the template and fabric. Press seams toward Piece 2. Your seams should face the shiny side of the template paper. Press pieces 1 and 2 to ensure that the template sticks to it.

13 Repeat steps 7–12 on the remaining pieces. Be sure to follow the numbers in the correct order, always pressing towards the newest piece.

### Finishing the Block

14 Trim down the FPP template on the dotted lines. Stitch together the sewn template and appliquéd Piece 8 (Image 14), making sure that all leaves land inside of the pot before stitching. Press seams toward pot.



If you prefer a video tutorial on this method, check out my full-length video tutorial at [www.RachelRossi.design/no-tear-fpp](http://www.RachelRossi.design/no-tear-fpp)

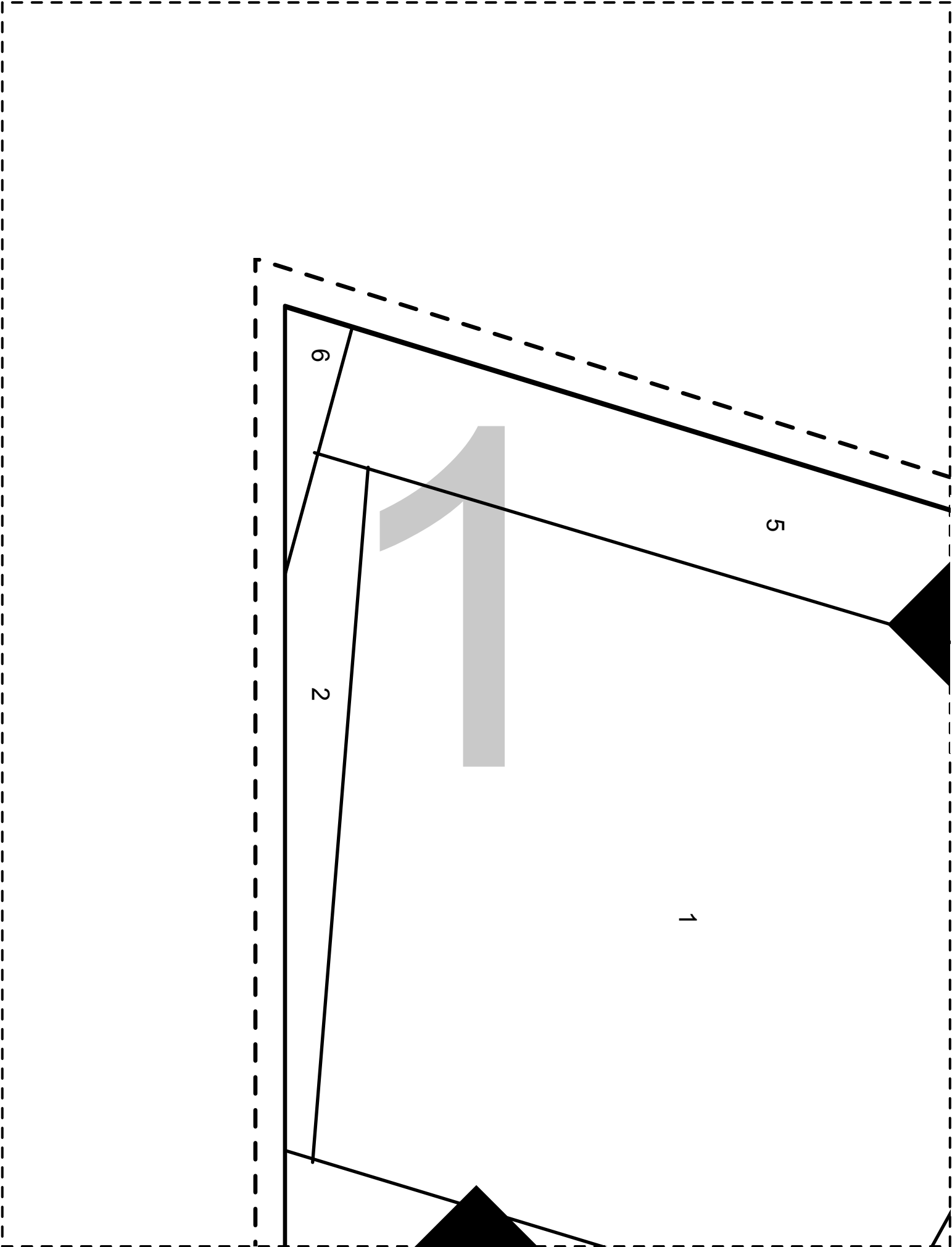


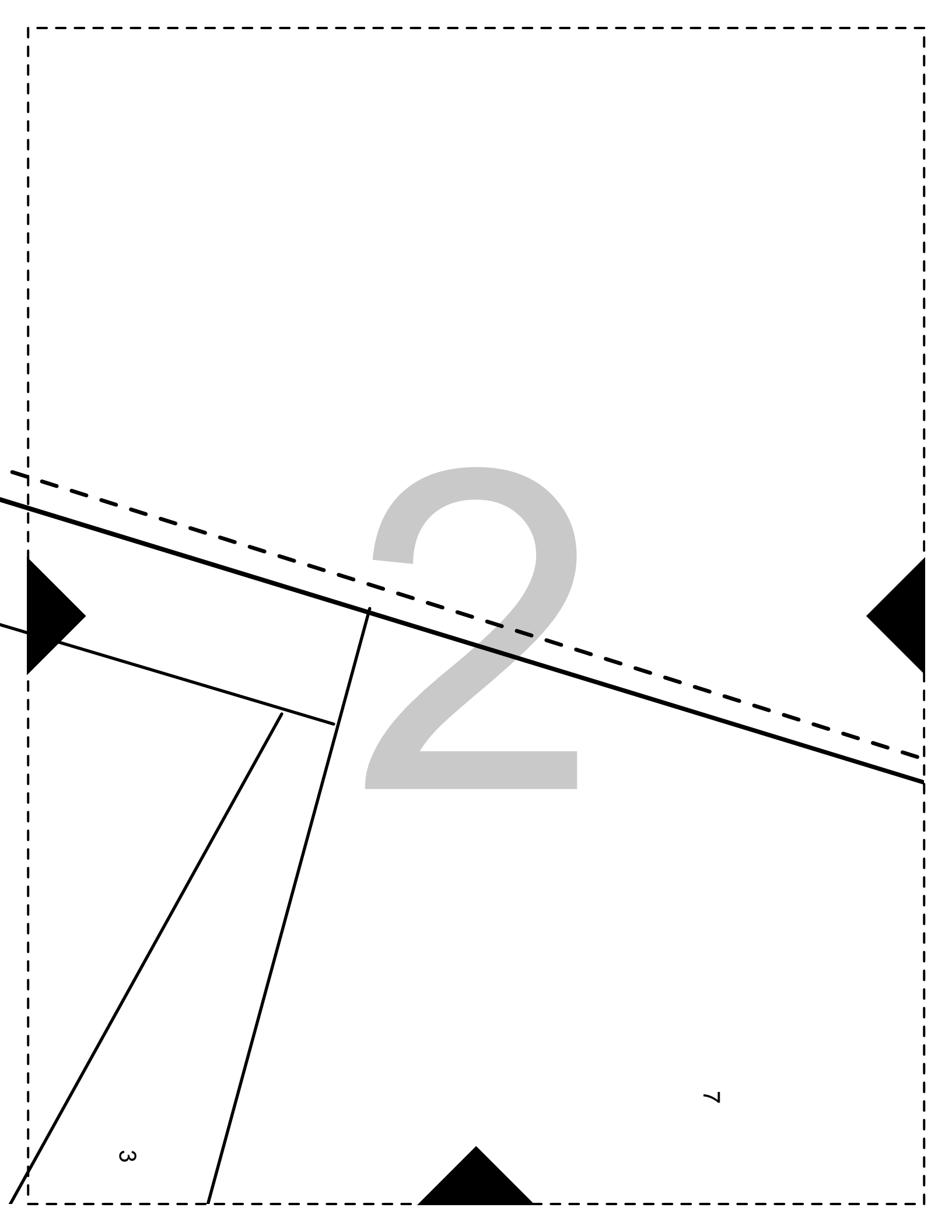
Looking for a tutorial on directional fabrics and FPP? Check it out: [www.RachelRossi.design/directional-fpp](http://www.RachelRossi.design/directional-fpp)

All seams are assumed to be a scant 1/4" unless noted otherwise.

Trim down the top and right hand side of your block to measure 15-1/2" T x 20-1/2" W





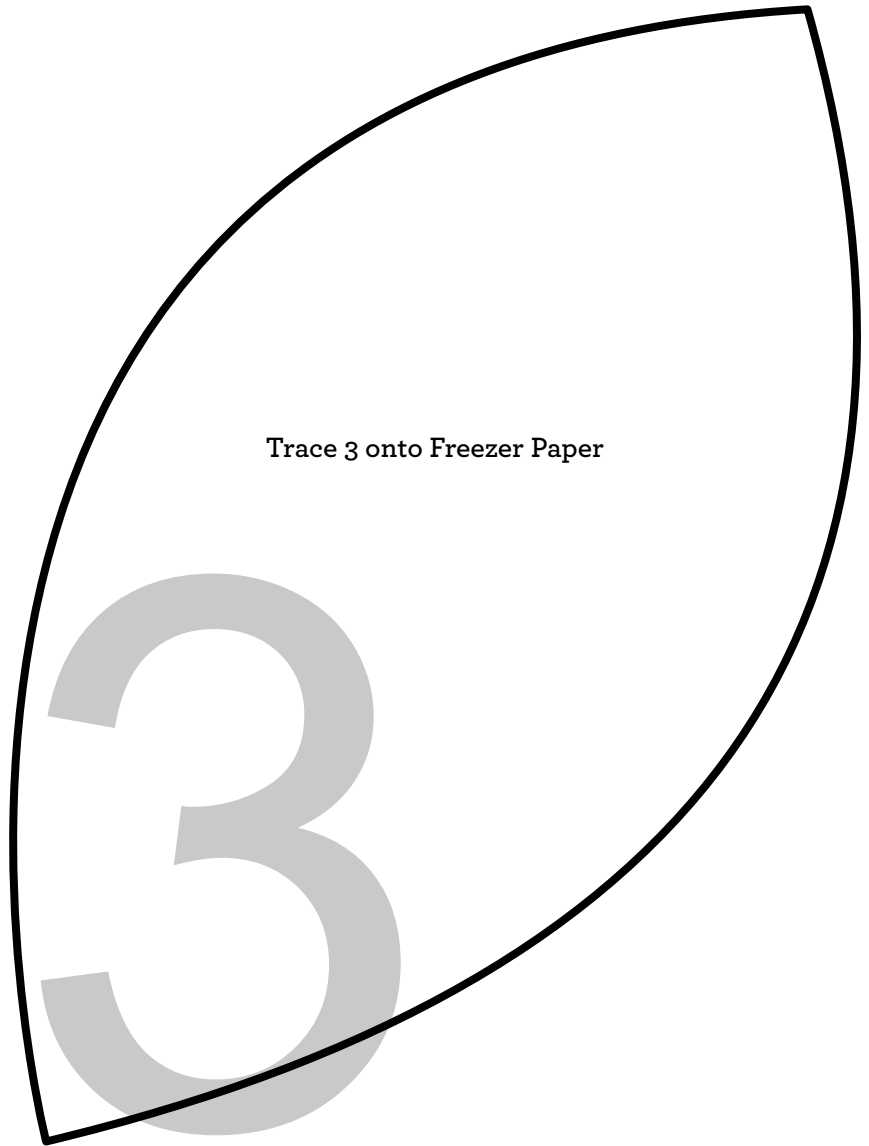


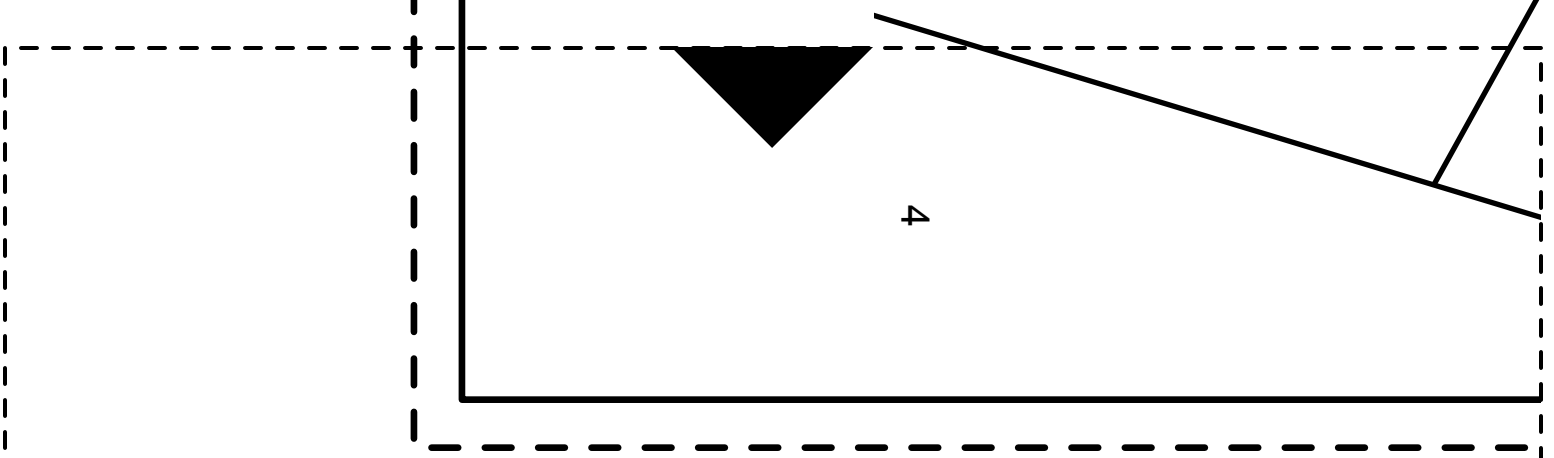
2

3

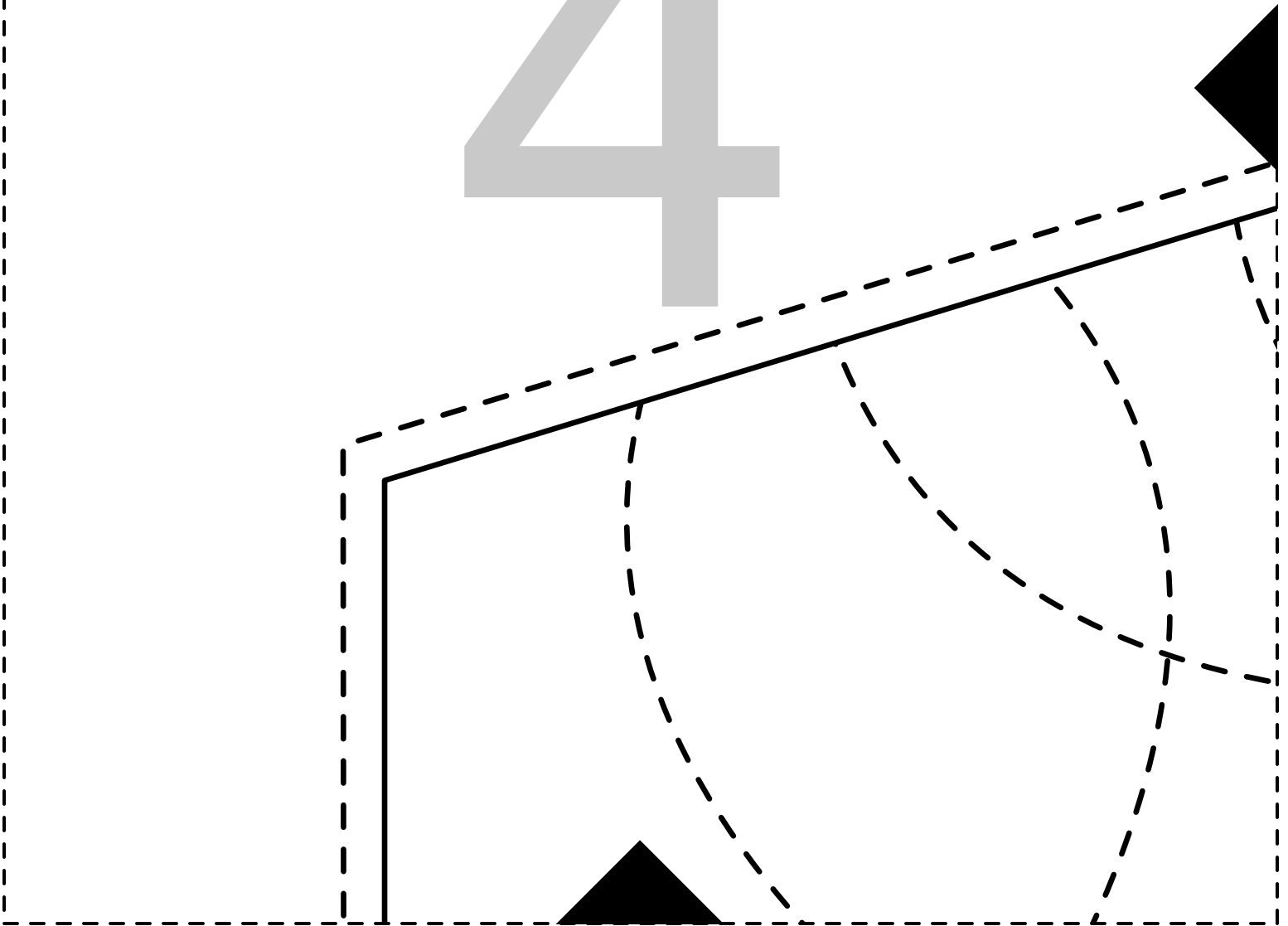
7

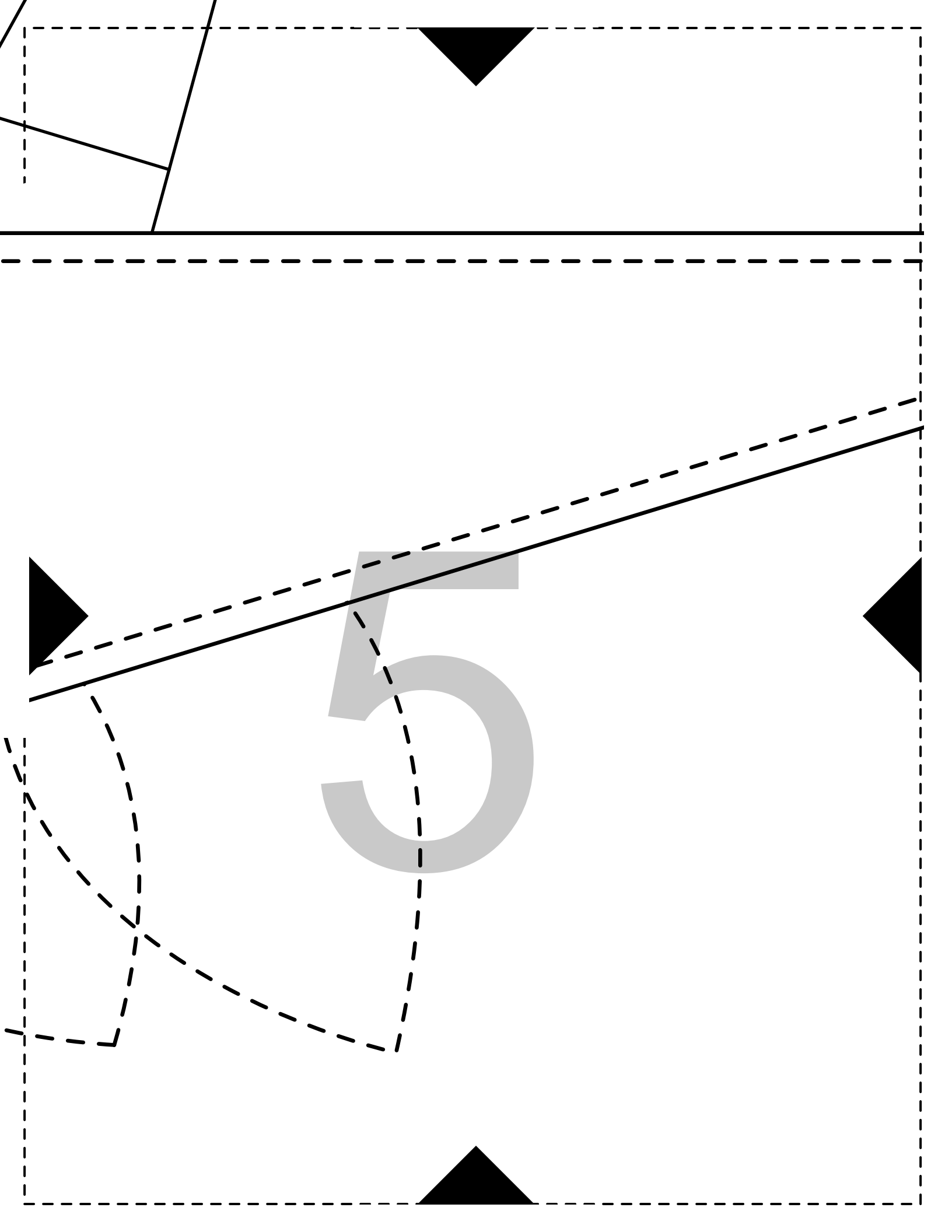
Trace 3 onto Freezer Paper

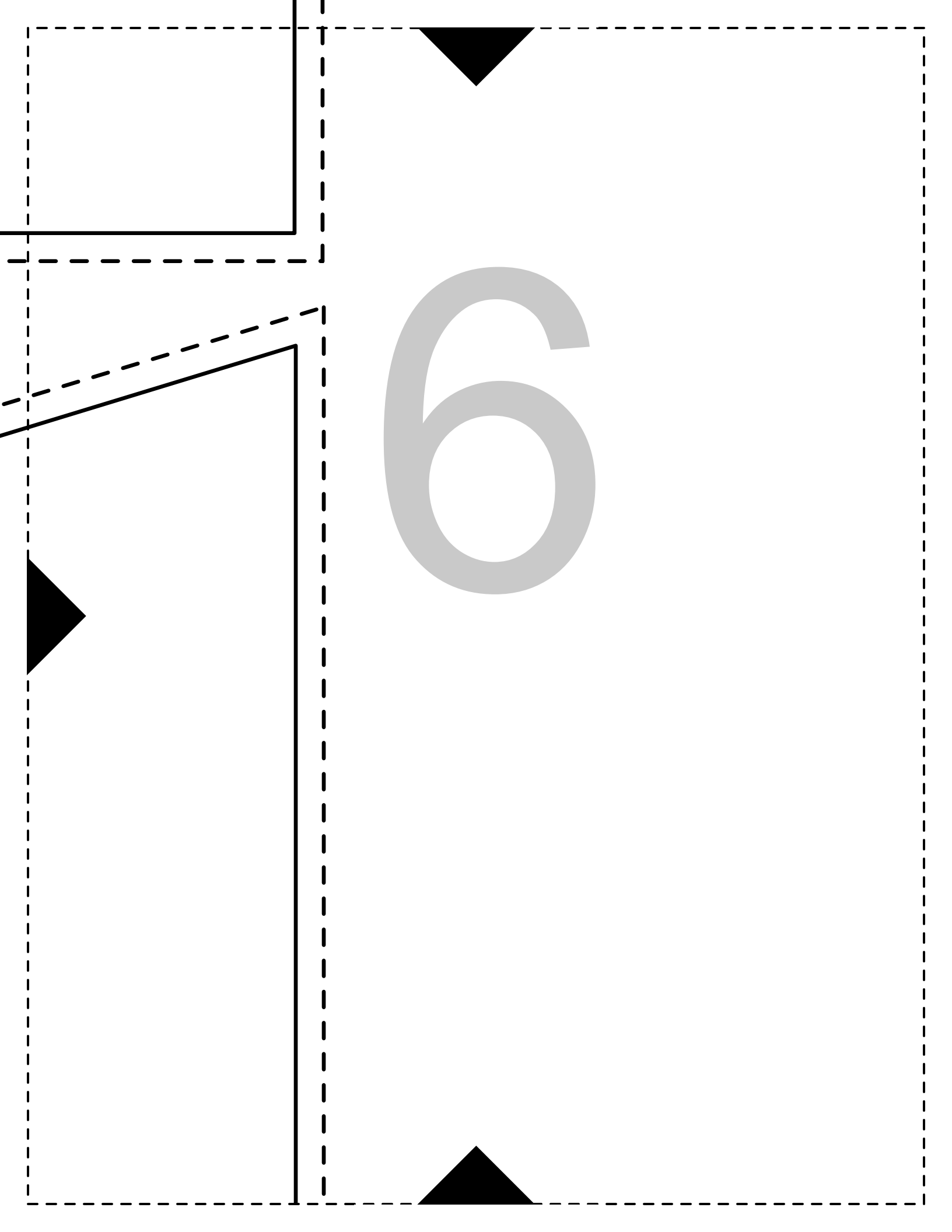




4



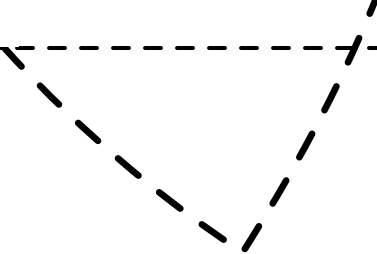


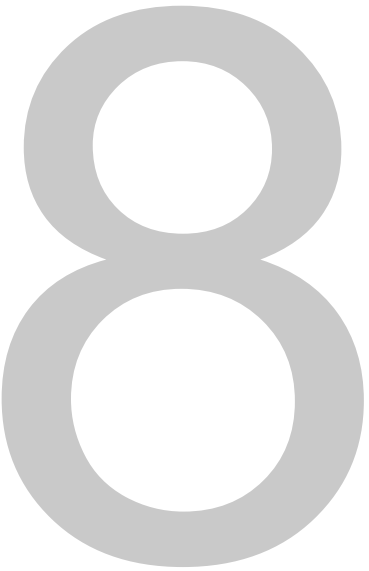


6



7



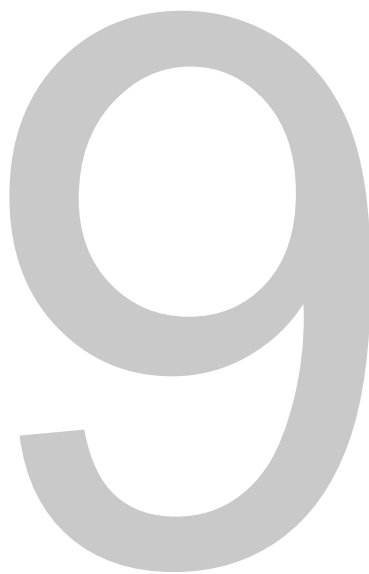


8

**Cut 1**

Press  
Freezer  
paper to  
RIGHT side  
of fabric

**This box  
should  
measure at 1"**  
If it doesn't,  
please re-print  
at 100% scale



Cut out templates long dotted lines. Tape pieces together to match black diamonds.

