



# BLOCK 10 | SNIP

Pattern by Rachel Rossi

**Level:** Beginner

**Techniques:**

- Foundation Paper Piecing
- (optional) Bias Tape Appliqué

**Supplies (FPP only):**

- Freezer Paper

**Supplies (Bias Tape option):**

- 1/2" Bias Tape Maker
- Starch
- Elmer's Disappearing Purple Glue Stick
- Erasable Fabric Marker
- Stabilizer

## FABRIC REQUIREMENTS

All fabrics are assumed to be 45" wide, 100% quilting cotton

- Background:** Scraps or 1/3 yard
- Blade:** Scraps from Block 1 or 1/8 yard
- Handle:** Scraps from Block 1 or 1/8 yard (If doing bias tape appliqué, you'll need 30" of bias)

Check out my full-length video tutorial at

[www.RachelRossi.design/no-tear](http://www.RachelRossi.design/no-tear)



*This block has two construction options: Both start with simple Foundation Paper Piecing. From there you can choose to continue with more advanced FPP (there's nothing really all that advanced about it, it's just a lot of tiny pieces, which I know can be intimidating!) or use bias tape appliqué to create the handles – this pattern covers it all!*

*If you're feeling wary about the tiny piecing, then feel free to go with option 2: a simple FPP method mixed with some tight Bias Tape Appliqué curves!*

## Cutting

### BACKGROUND

We will be using scraps from previous blocks to complete this FPP block, gather your background scraps!

### HANDLE AND BLADES

We will be using scraps saved from Blocks 1 and 4 for the snippers, gather your scraps and let's go!

## Sewing

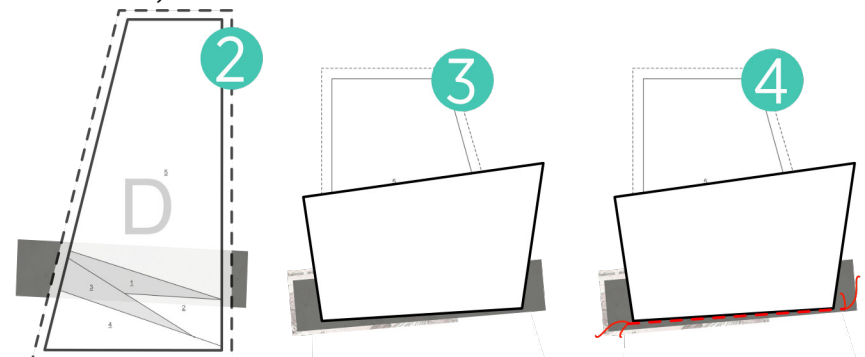
### Foundation Paper Piecing (Freezer Paper Method)

Both construction methods start with the FPP D template. Please follow the instructions below using the D template included in this pattern.

- 1 Tape together the first two template pages, matching black triangles. Trace all printed templates onto the dull side of your freezer paper with pencil. Fold along all solid black lines.
- 2 Each piece is labeled with a number in the order that it is to be assembled. Start by cutting out a scrap piece of fabric #1 (blade): cut a scrap piece about 1/2" bigger than the template on all sides. Place fabric piece 1 onto the shiny side of your freezer paper, wrong side against shiny side (Image 2). Press to temporarily hold in place. Make sure to center it in the space provided, leaving at least 1/4" on all sides. Turn the piece over and fold back the template along the line between spaces 1 and 2 (Image 3). Trim excess fabric to 1/4" (this will be your seam allowance).

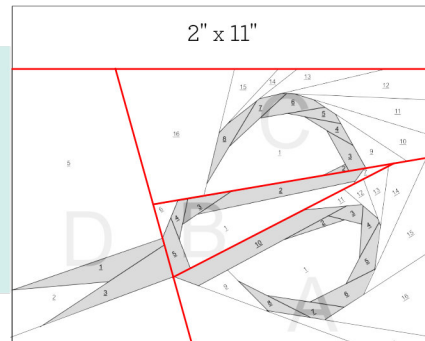
- 3 Place piece 2 against piece 1, right sides together, along the seam allowance you created between section 1 and 2 on the freezer paper template (Image 3).

- 4 Starting and finishing about 1/4" past each section, stitch along the folded edge of the template through both pieces of fabric, but not through the template (Image 4).



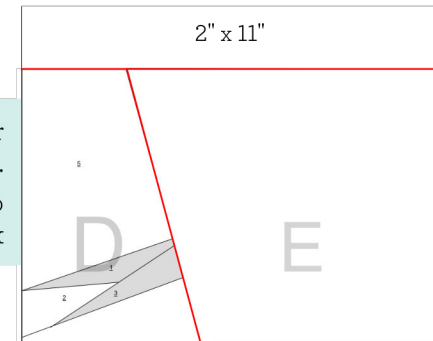
- 5 Keeping the template folded out of the way, trim excess fabric to a 1/4" seam.
- 6 Flatten out the template and fabric. Press seams toward Piece 2. Your seams should face the shiny side of the template paper. Press pieces 1 and 2 to ensure that the template sticks to it.
- 7 Repeat steps 2—6 on the remaining pieces, being sure to follow the numbers in the correct order, always pressing towards the newest piece.
- 8 Once the template is assembled, trim all edges along the **dotted** line on your template.  
*For those continuing on with FPP construction, repeat these steps on template pieces A,B, and C.*  
*For those who would like to use Bias Tape Appliqué for the handles, cut out Template E, PRESS TO WRONG SIDE OF FABRIC and follow the piecing instructions below:*
- 9 Now it's time to piece together the templates together! Matching right sides, piece together the block sections as shown:

#### FPP Templates:



First, stitch together templates A and B. Next, stitch on template C. Add template D. Finally, add a 2" x 11" strip to the top of the block

#### Bias Tape Appliqué:



First, stitch together templates D and E. Now, add a 2" x 11" strip to the top of the block

Your final block should measure 10-1/2" T x 11" W

**NOTE:** Trim from top and right side of block so that you don't lose the point on your snips!

When working with tight curves, it helps to pin finished bits of the bias tape to the ironing board to keep them in place as you work with the remaining tape.

*If you've chosen to complete the block with the FPP method, then you're finished! Trim up your block and I'll see you next month! If you're creating the handles using Bias Tape Appliqué, follow the instructions below:*

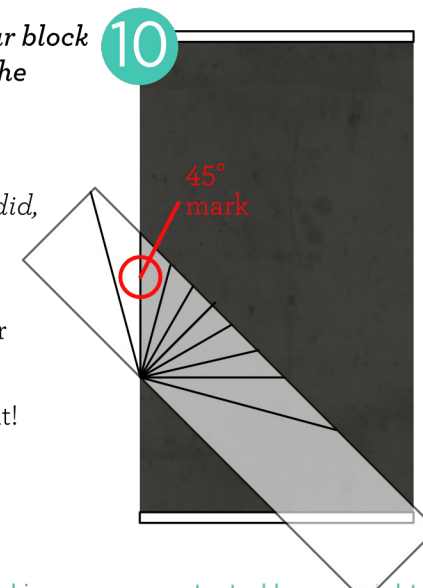
#### Adding Bias Tape Appliqué

*If you didn't save bias strips from Block 4, then follow the bias cutting instructions below. If you did, then skip to Step 14.*

10 Lay out your bias fabric on a cutting mat. Cut a straight edge. Place your ruler's 45 degree mark on the straight edge of your fabric (Image 10). Cut along the edge of your ruler for a bias cut that measures at least 25"

12 Flip the strip, use the ruler's 1" markings and cut one 1" strip. Be careful not to stretch it! Starch and press with no steam in the iron.

13 Feed the strip through a bias tape maker and press (no steam).



It may be helpful to place your paper template under or trace it onto your background fabric as a guide before gluing.

For a video tutorial on Invisible Machine Stitch Appliqué, visit: [www.RachelRossi.design/invisible](http://www.RachelRossi.design/invisible)



**14** Lay the bias tape on top of the included template (below). Turn the steam on your iron and "mold" the bias tape to match the template. Trim 1/4" past each end, fold under, and let cool.

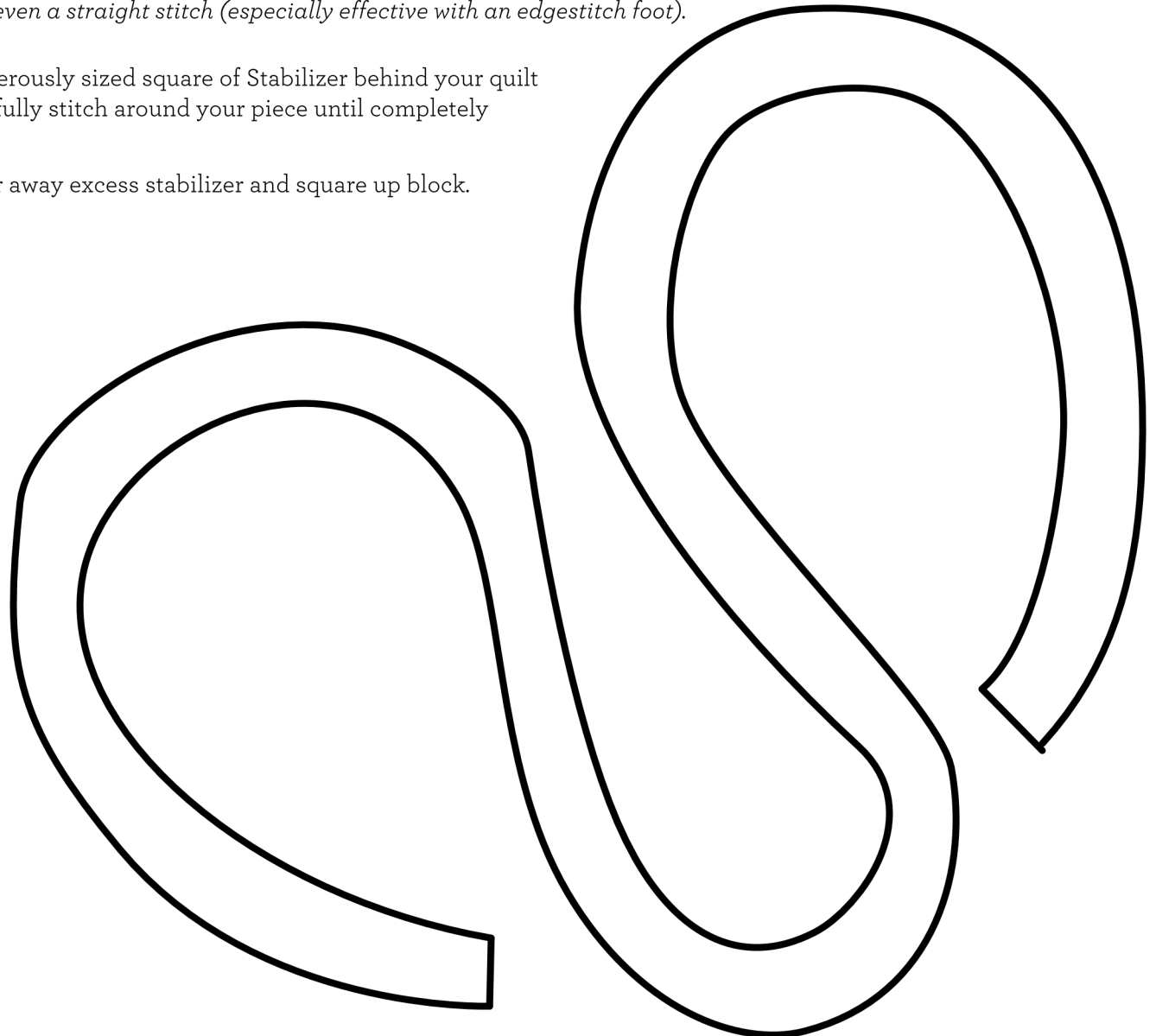
While that cools, trace the template below onto your block to ensure perfect positioning!

**15** Carefully flip your bias handle over, spread a generous amount of Elmer's glue on the back side of the bias tape and carefully place on the Scissor block. Press into place (no steam).

*Set your sewing machine to your preferred appliqué stitch. I prefer a small zig zag and will often use monofilament thread to make it look hand stitched. For full instructions on this technique, please visit: [www.RachelRossi.design/invisible](http://www.RachelRossi.design/invisible). Other options include blanket stitches, or even a straight stitch (especially effective with an edgestitch foot).*

**16** Place a generously sized square of Stabilizer behind your quilt block. Carefully stitch around your piece until completely attached.

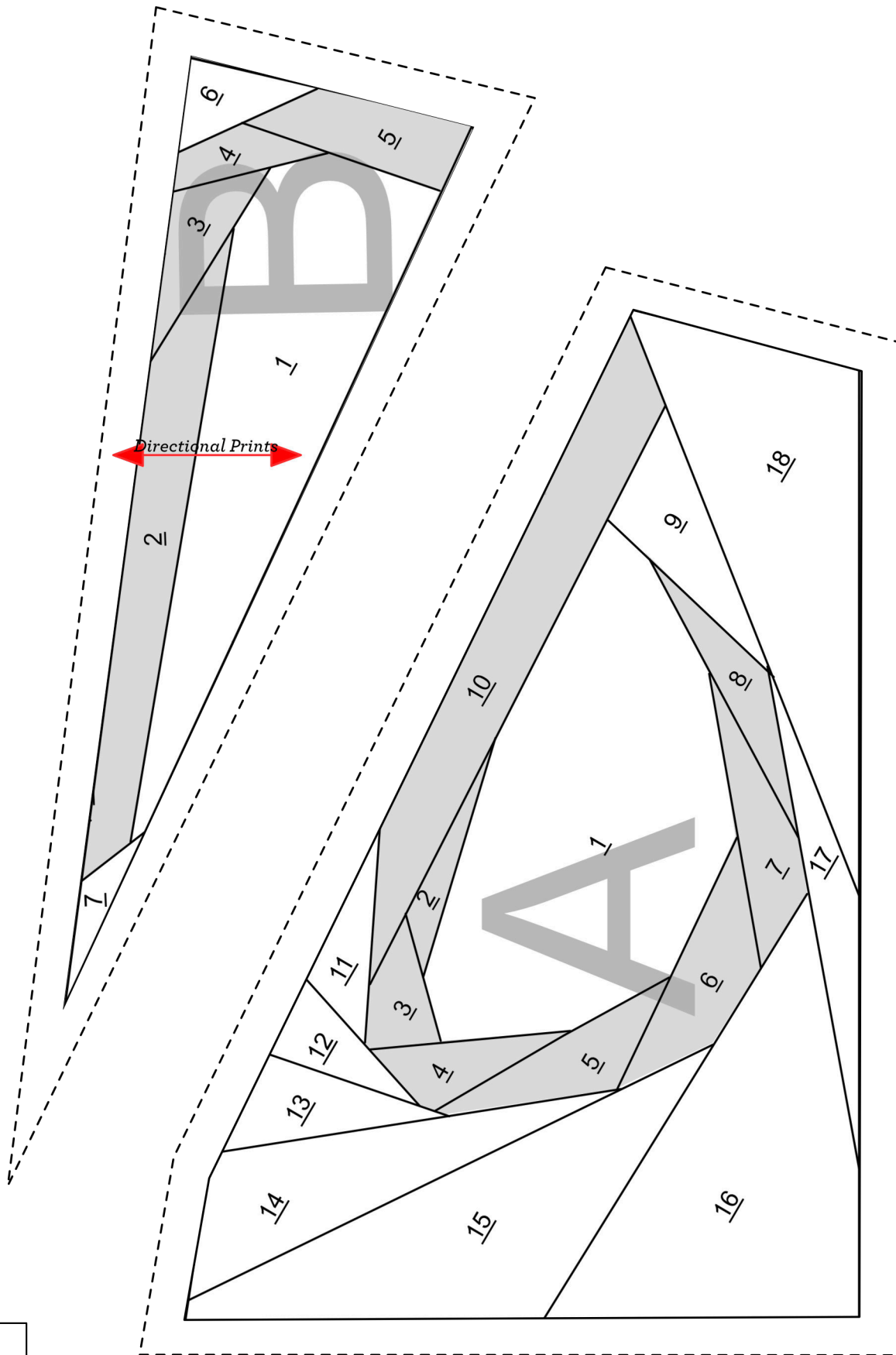
**17** Trim or tear away excess stabilizer and square up block.



Your final block should measure 10-1/2" T x 11" W

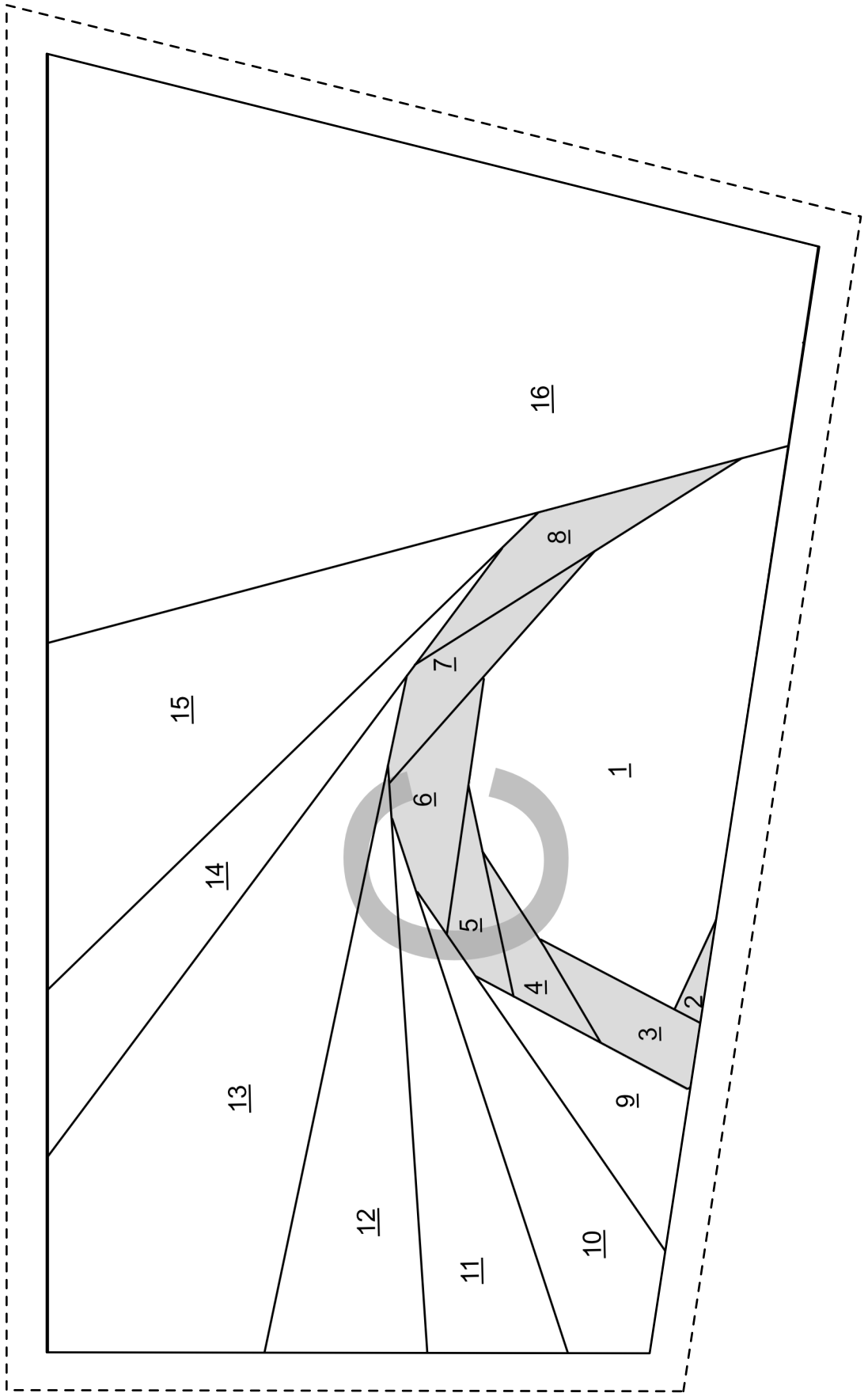
*You did it!*  
TELL THE WORLD

Use #PottingTableQuilt on Instagram and Facebook and tag @DesignsbyRR

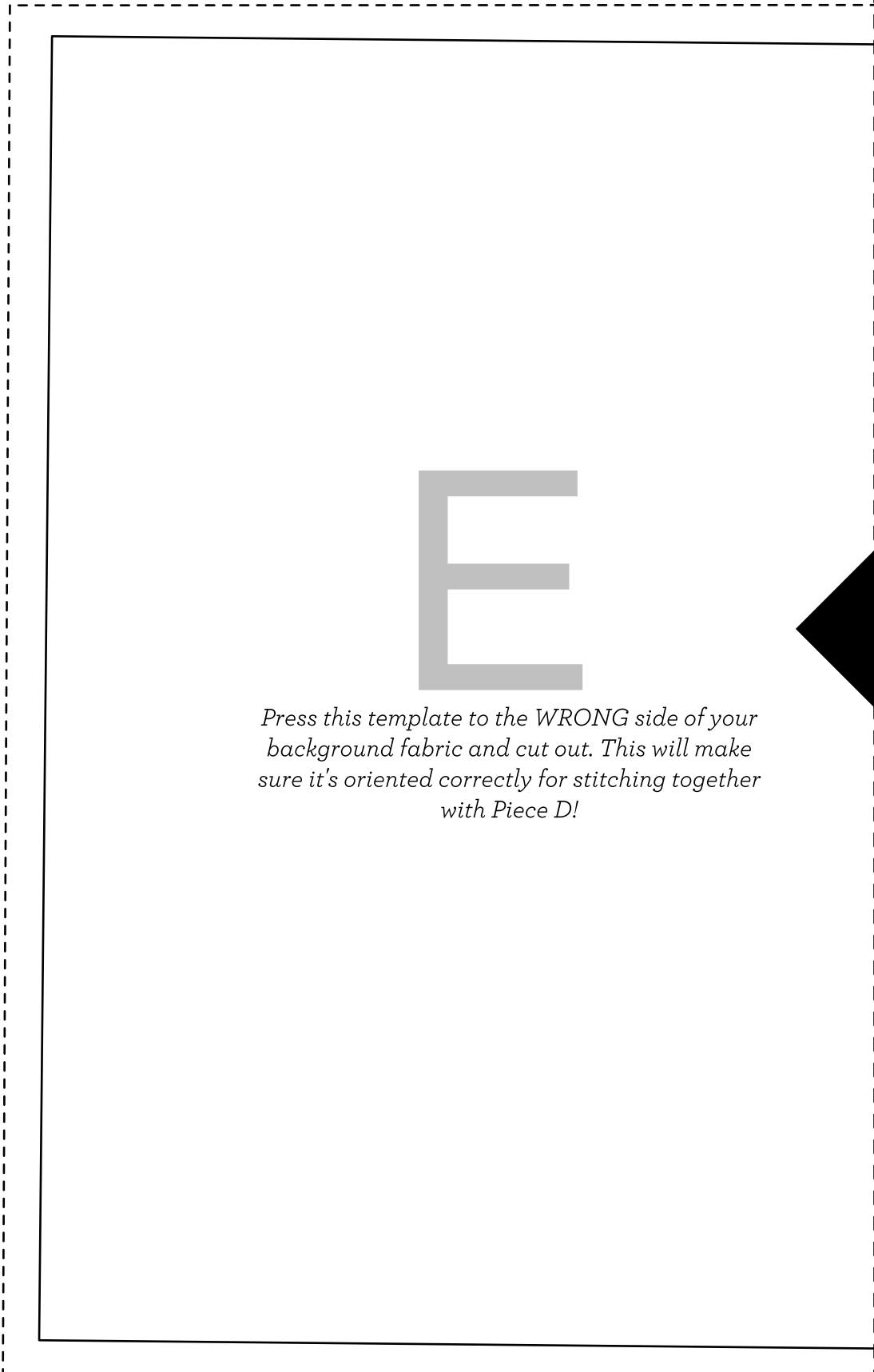


**This box  
should  
measure at 1"**  
If it doesn't,  
please re-print  
at 100% scale

**This box  
should  
measure at 1"**  
If it doesn't,  
please re-print  
at 100% scale



1



*Press this template to the WRONG side of your background fabric and cut out. This will make sure it's oriented correctly for stitching together with Piece D!*

**This box should measure at 1"**  
If it doesn't, please re-print at 100% scale

2



*Join Piece D along this edge after stitching*

D

