

BONUS PROJECT | LABEL

Pattern by Rachel Rossi

Level: Beginner

Techniques:

- Traditional Piecing
- Invisible Machine Appliqué

Supplies:

- Elmer's Disappearing Purple Glue Stick
- Medium Weight Stabilizer
- Washn-n-Gone Interfacing
- Freezer Paper

FABRIC REQUIREMENTS

All fabrics are assumed to be 45" wide, 100% quilting cotton:

-Background:

- 7 x 13" scrap,
- 11" square scrap (optional)

-Leaves: Scraps

-Leftover curved piecing from Block 5 (Planter)

Cutting

BACKGROUND

Rectangle A: Using scraps, cut one rectangle measuring 6" H x 11.75" W

Rectangle B (optional): Using scraps, cut one rectangle measuring 10-1/2" H x 10-1/2" W

This is what your finished label could look like! Keep it small by writing on the largest pot or make it larger by adding more background fabric with Rectangle B.



LEAVES

Gather scraps from your leaf and vine fabrics. Cut 3-5 template pieces from page 3. See further instructions on Page 2.

TERRACOTTA

Gather the three cuttings from Block 5 (Planter) that were cut in Step 8 (Page 4)

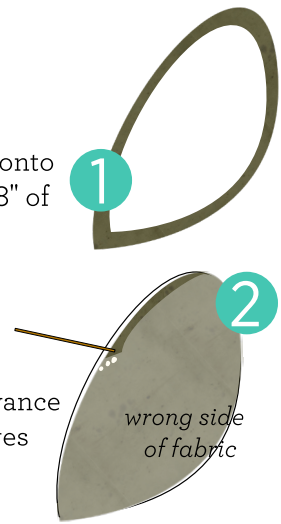


All seams are assumed to be a scant 1/4" unless noted otherwise.

Sewing

Creating the Planter - Curved Piecing with the Shorthand Template

- 1 Trace 5 leaf templates (Page 3) onto the dull side of your freezer paper. Cut out the templates and press onto the RIGHT side of your scrap leaf and vine fabric (no steam). Cut fabric around leaf template, leaving 1/8" of fabric showing (Image 1). Carefully clip all curves, making sure to not cut all the way into your 1/8" allowance.
- 2 On the wrong side of the fabric, apply a small amount of glue around the perimeter of the piece, in small sections at a time, 1/8" from the edge (Image 2)
- 3 Using That Purple Thang (a wooden skewer or toothpick works well for this), gently turn the seam allowance onto the back of the piece and onto the glue so that the white freezer paper edge barely shows on all edges (Image 2). Repeat for all pieces.



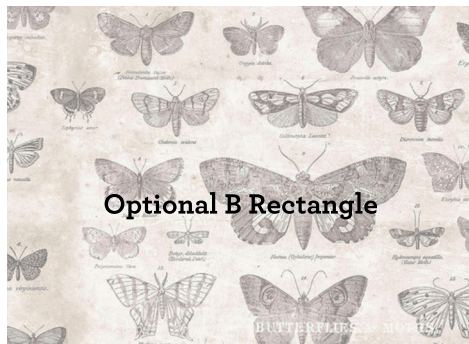
- 4 Place the appliqué onto your background fabric Rectangle. Arrange as you like or as shown in the image, left (Image 4). Then use your glue stick to hold the templates in place while sewing. Remove freezer paper and trim leaves that hang over the raw edge.

- 5 Place Stabilizer below quilt block for a smooth appliqué. Then, using a 60/80 Microtex needle and mono-filament thread (paired with a cotton bobbin thread), set your machine to a zig zag stitch. Carefully stitch around the pieces. The stitch length should be small and the bite should be narrow (about 1/8" [My machine is set to 1 on the stitch length and 1 on the stitch width]). Try to stitch as close as you can to the appliqué piece. Trim edges that hang over the raw edge of the background and set aside.

- 6 Taking the three pot scraps from Block 5, choose one to be the bottom pot (Image 8). Set aside.

- On the remaining two scraps, cut off the top 2", creating a total of four long skinny strips (Image 6). Discard the bottom and keep the tops.

- 7 Stitch together the appliquéd background rectangle, the two trimmed pots, and the large pot scrap as shown in Image 8. Press all seams down. Trim to measure 10-1/2" square.



- 8 Write your quilt label information on the largest bottom pot OR for a larger label, add another background rectangle to the side of your block. This should measure 10-1/2" tall x the width of your choosing.

- 7 Cut a piece of Wasn-n-Gone interfacing to match the finished size of your label. With right sides together, stitch the interfacing to the block on all four sides. Clip corners, cut a small hole in the center of the interfacing and turn right side out. Press and hand stitch onto the back of your quilt

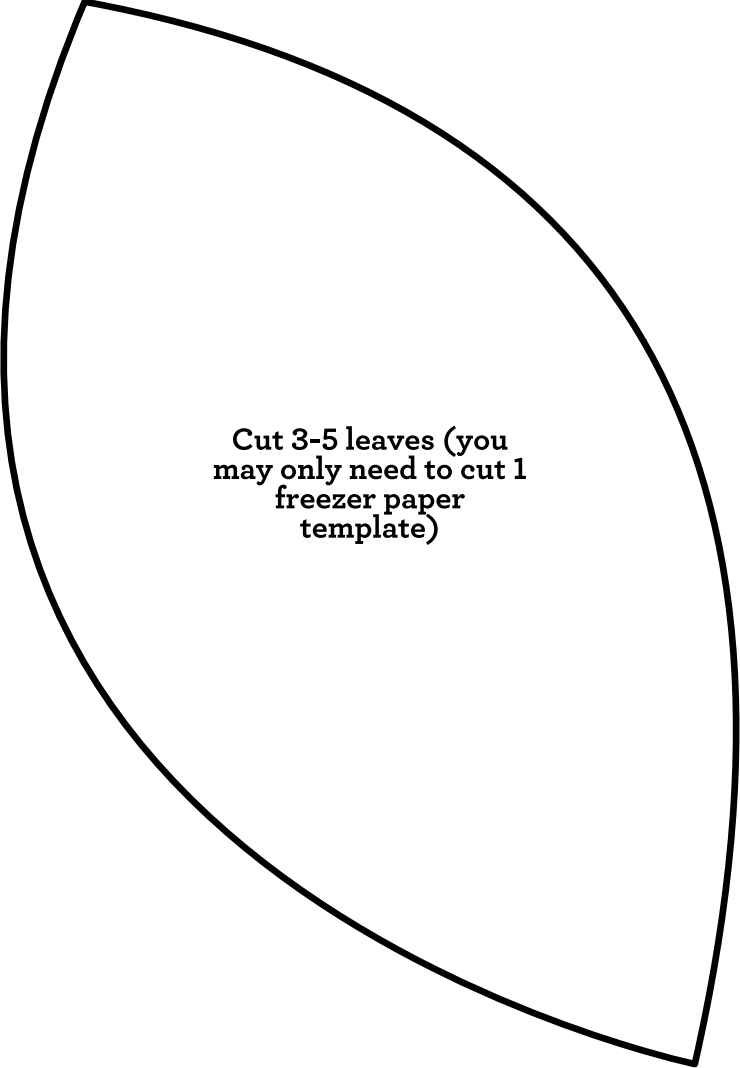


LEAF TEMPLATE

Templates not printing to scale?

Make sure in the print dialog box that it says "Scale: 100%" or "Print to Scale"

**Should
measure
1"**



**Cut 3-5 leaves (you
may only need to cut 1
freezer paper
template)**